

Advanced Printer Driver Ver.4

Install Manual

Overview

An overview of the APD and the description of operating environment.

Installation and Setup

Descriptions from installation of the APD to making prints with the TM printer.

Silent Installation

Descriptions of the silent install.



Cautions

- No part of this document may be reproduced, stored in a retrieval system, or transmitted in any form or by any means, electronic, mechanical, photocopying, recording, or otherwise, without the prior written permission of Seiko Epson Corporation.
- The contents of this document are subject to change without notice. Please contact us for the latest information.
- While every precaution has taken in the preparation of this document, Seiko Epson Corporation assumes no responsibility for errors or omissions.
- Neither is any liability assumed for damages resulting from the use of the information contained herein.
- Neither Seiko Epson Corporation nor its affiliates shall be liable to the purchaser of this product or third parties for damages, losses, costs, or expenses incurred by the purchaser or third parties as a result of: accident, misuse, or abuse of this product or unauthorized modifications, repairs, or alterations to this product, or (excluding the U.S.) failure to strictly comply with Seiko Epson Corporation's operating and maintenance instructions.
- Seiko Epson Corporation shall not be liable against any damages or problems arising from the use of any options or any consumable products other than those designated as Original EPSON Products or EPSON Approved Products by Seiko Epson Corporation.

Trademarks

EPSON® and ESC/POS® are registered trademarks of Seiko Epson Corporation in the U.S. and other countries.

MS-DOS®, Microsoft®, Win32®, Windows®, Windows Vista®, Windows 7™, Windows Server®, Visual Studio®, Visual Basic®, Visual C++®, and Visual C#® are either registered trademarks or trademarks of Microsoft Corporation in the United States and other countries.

ESC/POS® Command System

EPSON has been taking industry's initiatives with its own POS printer command system (ESC/POS). ESC/POS has a large number of commands including patented ones. Its high scalability enables users to build versatile POS systems. The system is compatible with all types of EPSON POS printers (excluding the TM-C100) and displays. Moreover, its flexibility makes it easy to upgrade the future. The functionality and the user-friendliness is valued around the world.

For Safety

Key to Symbols

The symbols in this manual are identified by their level of importance, as defined below. Read the following carefully before handling the product.

CAUTION

Provides information that must be observed to avoid damage to your equipment or a malfunction.

NOTE

Provides important information and useful tips.

Restriction of Use

When this product is used for applications requiring high reliability/safety such as transportation devices related to aviation, rail, marine, automotive etc.; disaster prevention devices; various safety devices etc; or functional/precision devices etc, you should use this product only after giving consideration to including fail-safes and redundancies into your design to maintain safety and total system reliability. Because this product was not intended for use in applications requiring extremely high reliability/safety such as aerospace equipment, main communication equipment, nuclear power control equipment, or medical equipment related to direct medical care etc, please make your own judgment on this product's suitability after a full evaluation.

About this Manual

Aim of the Manual

This manual is aimed to provide the necessary information to install the EPSON™ printer driver and Customer display (Advanced Printer Driver).

Manual Content

The manual is made up of the following sections:

Chapter 1	Overview
Chapter 2	Installation and Setup
Chapter 3	Silent Installation

Contents

■ For Safety	3
Key to Symbols	3
■ Restriction of Use	3
■ About this Manual	4
Aim of the Manual.....	4
Manual Content	4
■ Contents	5

Overview 7

■ Introduction.....	7
Package organization.....	7
Manual organization	8
■ Operating Environment.....	9
Computer	9
OS	9
.NET Framework Version	10
Interface	10
Application.....	10
■ Supported Models	11
■ Connection Pattern	12
Connecting cable.....	13
■ Differences Depending on the OS	14
■ Restrictions	15
■ Manuals/Sample Programs	16
Installation.....	16
Uninstallation	17

Installation and Setup..... 19

Notes on upgrading from APD 2.xx, 3.xx.....	19
■ Installation methods	20
■ Standard Install	21
Installation Flow	21
Installation.....	21
Connecting the TM Printer.....	27
Print Test Page	29

■ Uninstallation	30
■ When connecting Customer Display to TM printer	32
Installation Flow	32
Installation when using pass-through connection.....	32
Installation when using Y-connection	36
Connecting the devices	40
Test print/display	41
■ Plug and Play	42
Installation Flow	42
Connecting the TM Printer	43
Installing the printer driver	43
■ Custom Install	44
Installation Flow	44
Installation	44
■ Shared Printer	49
Installation	49
Uninstallation.....	52
■ Maintenance after Installing the APD	55
Adding the printer driver	55
Uninstalling the printer driver.....	58
Replacing a printer	59
Changing the port settings of the printer driver.....	60
Upgrade Install of the APD	61

Silent Installation 63

■ What Is a Silent Installation?	63
Flow of the Silent Installation	64
■ Setting the APD Environment To Be Copied.....	64
APD Setting	65
■ Creating a Package or Script file	66
■ Executing the Silent Installation	69
How to execute the Silent Installation.....	69
Checking the Installation Result	70
Command Options	70

Overview

Introduction

Advanced Printer Driver (hereafter called APD) is a Windows printer driver for EPSON TM printers and Customer Displays. You can display the Customer Display using the same operation as printing.

APD can monitor the status of the TM printer with Status API for use of POS embedded. However, the Customer Display is not supported.

The APD environment that is already set up can be restored (silent install) on another computer. The printers locally connected to the computers can be used as shared printers (Point & Print), by using network function of the OS.

Package organization

The APD consists of the following packages.

APD installer (APD_4xxE.exe)

A package to install the APD.

Manual/Sample installer (APDMANE_x.exe)

A package to install APD manuals (PDF) and sample programs using the APD.



Manual organization

Install Manual

This manual. Descriptions of the procedures from installing the APD to performing test print, adding printer drivers, and the silent install which is an automated APD installation.

TM Printer Manual

Descriptions of how to use the APD and its functions.

Printer Specification

Descriptions of the specifications of each printer driver.

TM-C100 Manual

Descriptions of how to use the TM-C100 printer driver and its functions.

Customer Display Manual

Descriptions of how to use the Customer Display printer driver and its functions.

Status API Manual

Descriptions of how to get the status of the TM printer from the user application by using the Status API.

Devmode API / PRINTERINFO Manual

Descriptions of how to configure some printer functions on your application using the Devmode API. Descriptions of the PRINTERINFO Function of Windows.

Operating Environment

Computer

Any PC/AT compatible machine running any of the following Windows systems.

OS

- Microsoft Windows 7 (32bit/64bit)
- Microsoft Windows Vista SP2 (32bit/64bit) English version
- Microsoft Windows XP Professional SP3 (32bit) English version
- Microsoft Windows Server 2003 R2 SP2 (32bit/64bit)
- Microsoft Windows Server 2008 SP2 (32bit/64bit)
- Microsoft Windows Server 2008 R2 (64bit)

The following service/software is supported in Windows Server 2003/2008 environment.

Terminal Service

Citrix XenApp5.0

- Microsoft Windows Embedded POSReady 2009
- Microsoft Windows Embedded for Point of Service 1.1 (32bit)
- Microsoft Windows Embedded Standard(32bit) English version

The following components are required.

Volume Shadow Copy Service

System Restore Core

OLE Dialog Interfaces

Local Printing Support

Task Scheduler (Required for USB driver installation)

Primitive: DbgHelp (Required for USB driver installation)

Communications Port (If the Computer has no serial or parallel port, one of them must be installed manually.)

Primitive: Winhlp32 Required for help file browsing)

After installing the components listed above, perform a dependency check for the components using the utility of the Windows XP Embedded (Target Designer). For more details, ask your OS distributors.

NOTE

OSs other than those listed above are not supported.

.NET Framework Version

For .NET environment, use in the following environment.

- .NET Framework 2.0 or later.
- For Windows Vista, .NET Framework 3.0 or later is installed.

Interface

The following interfaces are supported with the APD.

Interface	Descriptions
Parallel	-
Serial	-
USB	USB 2.0 compliant (Full-Speed 12 Mbps operation. High-Speed operation is not possible.)
Ethernet	10/100 Base-T (To configure the settings of IP Address, see the UB-E02 Technical Reference Guide.)
Wireless LAN	IEEE 802.11b (To configure the settings of IP Address, see the UB-R02 Technical Reference Guide.)

Interfaces only for the Customer Display or Drawer can be mounted on some TM printer models.

For information on the interfaces available on your TM printers, ask your sales representative.

Application

The APD supports direct printing from the Windows applications. No programming is required for printing directly from commercial applications, such as word processing or spread sheet.

When you want to receive TM printer statuses such as paper out errors at your application, use the Status API. In this case, you need to develop the applications to incorporate the monitoring function.

Supported Models

APD 4.xx supports the following models.

DM-D10X/20X	DM-D110/210	DM-D500	TM-C100	TM-H5000II
TM-H5200	TM-H6000II	TM-H6000III	TM-J2100	TM-J7100
TM-J7600/7500	TM-L60II	TM-L90	TM-L90 Peeler	TM-P60
TM-P60 Peeler	TM-T20	TM-T58	TM-T70	TM-T88III
TM-T88IV	TM-T88IV ReStick	TM-T88V	TM-T90	TM-U120
TM-U120II	TM-U220	TM-U230	TM-U295	TM-U325
TM-U375	TM-U590	TM-U675	TM-U950	BA-T500
BA-T500II	EU-T300	EU-T400	EU-T500	

CAUTION

The printer driver for the TM-T88IV does not support the TM-T88IV ReStick. Also, the printer driver for the TM-T88IV ReStick does not support the TM-T88IV.

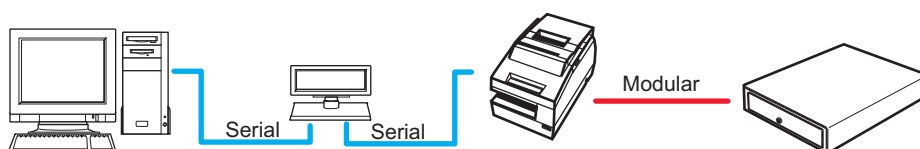
Connection Pattern

When connecting the Customer Displays or the Cash Drawers to the TM printers.

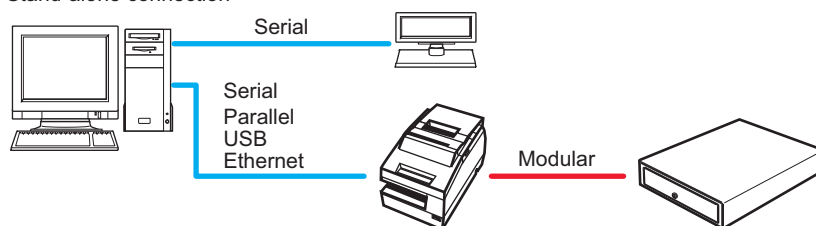
The connection patterns shown below are available depending on the TM printer interface. For the pass-through connection or Y-connection, be sure to install the drivers in the correct order.

Pass-through connection

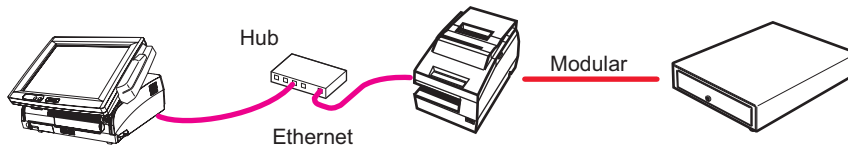
When using this connection method, first install the Customer Display driver. Then, install the TM printer driver.



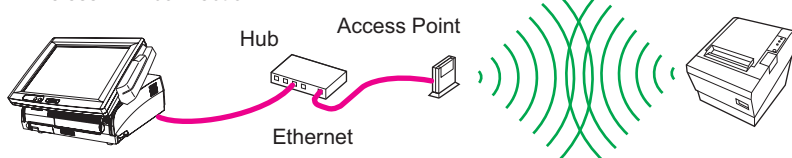
Stand-alone connection



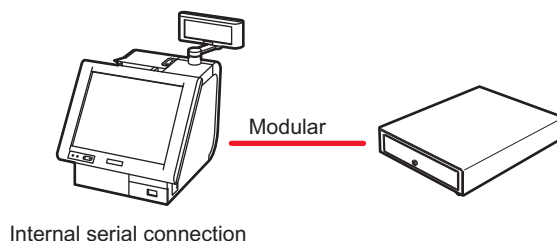
Ethernet connection



Wireless LAN connection



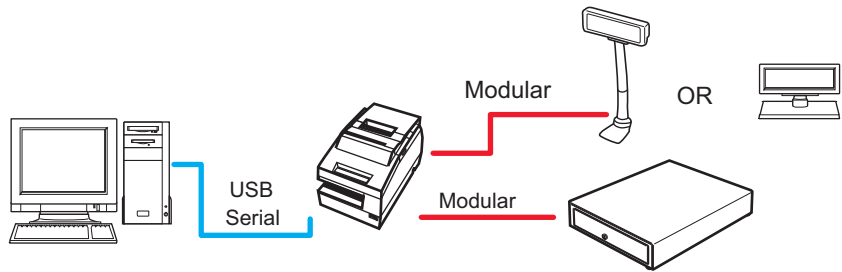
IR-700



Internal serial connection

Pass-through (Y) connection

When using this connection method, first install the TM printer driver.
Then, install the Customer Display driver.



CAUTION If you use a connection with interface conversion connector or interface expanded board, the operation is not guaranteed.

- NOTE**
- Select the appropriate connection patterns for each TM printer model (interface specification) and configure the communication settings of each interface.
 - Use DIP switch to configure communication settings of the TM printer and the Customer Display. For more details, see the manuals bundled with the products.

Connecting cable

For the Serial connection, use a cable configured as follows.

D-Sub 25P(TM)			D-Sub 9P(PC)	
Pin	Signal		Signal	Pin
1	FG		DCD	1
2	TXD		TXD	3
3	RXD		RXD	2
20	DTR		DTR	4
6	DSR		DSR	6
4	RTS		RTS	7
5	CTS		CTS	8
7	GD		GD	5
25	RESET		RI/RESET	9

Differences Depending on the OS

The content of the descriptions of some operations in this book may be different depending on the OS. See the following.

Item	Description
Screens shown	Screens in Windows Vista are used for the descriptions in this manual.
Confirmation and setting of the printer driver	Windows 7 (Start) - (Control Panel) - (Hardware and Sound) - (Devices and Printers) Right click the printer driver, and select the (Printer properties). Windows Vista (Start) - (Control Panel) - (Hardware and Sound) - (Printers) Right click the printer driver, and select the (Properties). Windows XP (Start) - (Control Panel) - (Printers and Faxes) Right click the printer driver, and select the (Properties).
Delete a shared printer	Windows 7 (Start) - (Control Panel) - (Hardware and Sound) - (Devices and Printers) Windows Vista (Start) - (Control Panel) - (Hardware and Sound) - (Printers) Windows XP (Start) - (Control Panel) - (Printers and Faxes)
Add a shared printer	Windows 7 (Start) - (Control Panel) - (Hardware and Sound) - (Add a printer) Windows Vista (Start) - (Control Panel) - (Hardware and Sound) - (Add a printer) Windows XP (Start) - (Control Panel) - (Add a printer)
Server Properties	Windows 7 When selecting a printer driver to delete in the (Devices and Printers) screen, the (Print server properties) message appears on the tool bar. Windows Vista (Printers) - (File) - (Run as administrator) - (Server Properties) Windows XP (Printers and Faxes) - (File) - (Server Properties)
Uninstall a program	Windows 7 (Start) - (Control Panel) - (Uninstall a program) Windows Vista (Start) - (Control Panel) - (Uninstall a program) Windows XP (Start) - (Control Panel) - (Add or Remove Programs)

Restrictions

- The APD cannot coexist with OPOS on a computer at the same time.
- When using the printer driver for EPSON Terminal Printers (laser printer, ink-jet printer and others) or EPSON printer window together with the APD, installation and uninstallation must be performed in the following order:

[Installation]

1. EPSON Terminal Printer driver
2. APD

[Uninstallation]

1. APD
2. EPSON Terminal Printer driver

If you want to overwrite the EPSON Terminal Printer driver after the APD is installed, uninstall the APD first and then overwrite the EPSON Terminal Printer driver.

- For a USB connection, the printer driver can be installed by Plug and Play after installing the APD; however, the printer driver cannot be added when the TM printer is offline (cover open, paper out, and so on.) When the printer recovers from the offline status, it will be added.
- The maximum number of printers that can be connected simultaneously through a USB connection is 8.
- When a Parallel interface TM printer is connected to Windows XP, a Plug and Play request window pops up and "EPSON TM-P2.01" is added in Other devices of the Device manager. Do not perform [Uninstall] or [Update Driver Software] for this device. When a Parallel interface TM printer is connected to the computer prior to the driver installation, the computer detects "EPSON TM-P2.01", but you should not uninstall or update, just click [Cancel]. (It is added to Other device in the Device manager, and deleted when the driver is installed.)

When you connect a TM printer with parallel interface before installing the driver, "EPSON-P2.01" is detected. In such case, just click "Cancel" and not select "Uninstall" or "Update Driver Software". (It is added to "Other device" in the Device manager, however, automatically deleted after the driver is installed.)

Manuals/Sample Programs


Manuals and sample programs are provided in a package separate from the APD.

Installation

Follow the procedures below to install the manuals and sample programs.

CAUTION

Install manuals/sample programs after installing the APD.

- 1** Double click the (Manual/Sample Installer) icon to start the installation.

- 2** The Install Shield Wizard screen appears. Click the (Next) button.
- 3** The "License Agreement" screen appears. Read the content and select "I accept the terms of the license agreement." Then click the (Next) button.
- 4** The "Select Features" screen appears. Select "Manual" or "Sample"; then click the (Next) button."
- 5** The "Ready to install the Program" screen appears. Click the (Install) button. The installation of manuals or sample programs starts.
- 6** The "Install Shield Wizard Complete" screen appears. Click the (Finish) button. Installation ends.
- 7** Select from (Start)-(All Programs)-(EPSON)-(EPSON Advanced Printer Driver 4) and open (Manual)/(Sample Program). The screen to select manuals and sample programs appears.

Uninstallation

Follow the procedures below to uninstall manuals and sample programs.

CAUTION

Uninstall manuals/sample programs before uninstalling the APD.

- 1** Select from (Start)-(Control Panel) and open (Uninstall a program).
([Reference page of other OS.](#))
- 2** The “Program and Features” screen appears. Click the (EPSON APD4 Sample&Manual) button.
- 3** The uninstallation confirmation screen appears. Click the (Yes) button. Manuals and sample programs are uninstalled.
- 4** Click the (Finish) button. Installation ends.



Installation and Setup

This chapter describes the procedures from the installation to execution of test print. The uninstallation procedure ([page 30](#)) and various maintenance procedures after installation ([page 55](#)) are also provided.

NOTE

The APD of version 4.07 or later supports 32 bit and 64 bit version OS.

CAUTION

- Install with Administrator privileges.
- Do not connect the TM printer, until installation of the APD completes.
- Close all running applications before the installation.

Notes on upgrading from APD 2.xx, 3.xx

APD 2.xx or 3.xx needs to be uninstalled in order to install APD 4.xx. Keep in mind the following points.

- When you install APD 4.xx to a computer on which APD 2.xx or 3.xx has been installed, the previous version is automatically uninstalled before the installation of APD 4.xx.
- Some printers do not support APD 4.xx. Make sure that your printer supports APD 4.xx. If you are using such printer and install APD 4.xx, the printer becomes unusable on your system.

Installation methods

The following methods are available to install the APD.

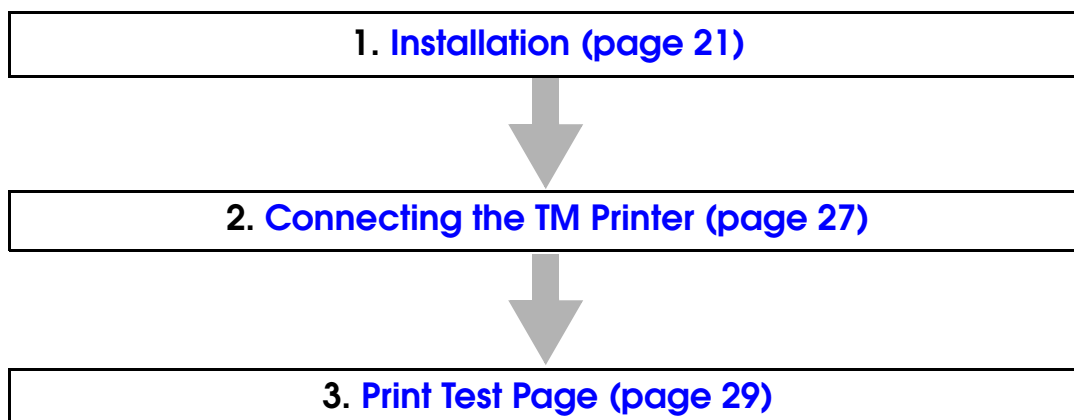
- **Standard Installation** [page 21](#)
This is a standard method to install the APD.
Use this method also when you connect the Customer Display with the stand-alone connection. For the APD of version 4.07 or later, the printer drivers for both 32 bit and 64 bit version OS are installed.
- **Installation when connecting Customer Display to TM printer** [page 32](#)
When you make pass-through or Y-connection ([page 12](#)) to use one port for your TM printer and Customer Display, their drivers should be installed in the specified order.
- **Plug and Play** [page 42](#)
TM printer with USB interface can be added as a printer device on a computer on which the APD is already installed (standard or custom install).
- **Custom installation** [page 44](#)
This allows you to select specific functions and port drivers to install the APD.
For the APD of version 4.07 or later, you can select the 32 bit printer driver or 64 bit printer driver according to your OS environment.
- **Installation for sharing the printer** [page 49](#)
This method installs a printer to be shared (Point & Print).
- **Upgrade installation of the APD** [page 61](#)
This allows you to perform upgrade installation of the APD of new version.
- **Silent installation** [page 63](#)
This allows you to copy the APD environment to other computers.

Standard Install

This is a standard method to install the APD. Under normal conditions, use this method.

For the APD of version 4.07 or later, the printer drivers for both 32 bit and 64 bit version OS are installed.

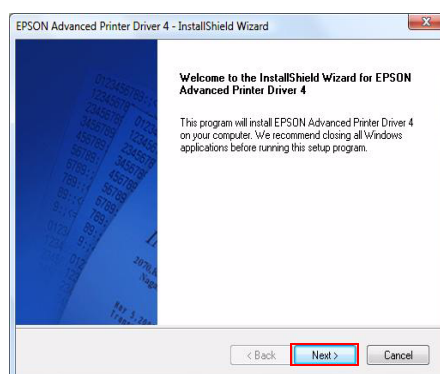
Installation Flow



Installation

Follow the procedure below.

- 1 Double click the (APD) icon and start the installation.
- 2 The Install ShieldWizard screen appears. Click the (Next) button.

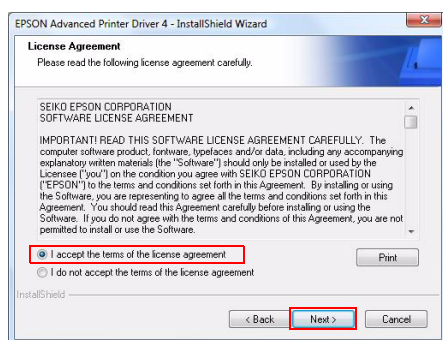


- 3 The "License Agreement" screen appears. Read the content and select "I accept the terms of the license agreement". Then click the (Next) button.
- 4 The "Setup Type" screen appears. Select "Standard", then click the (Next) button.
- 5 The "Printer Configuration" screen appears. When installing the printer driver as well as the APD, click the (Add) button. When you want to install the printer driver later, click the (Next) button and proceed to Step 11.

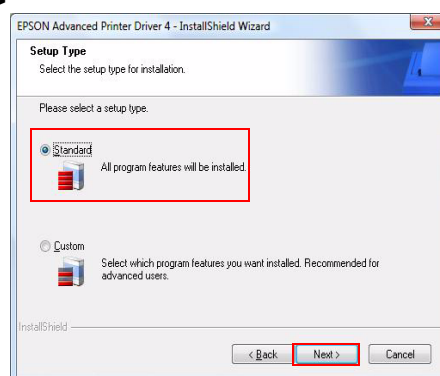
NOTE

- For the USB interface, installing the printer driver at Step 5 is not necessary, the printer driver will be installed by Plug and Play function of the computer after APD driver is installed.
- Click the [Copy] button to install more than one of the same printer driver. Up to 100 drivers can be copied. However, you can connect and use a maximum of 8 printers.

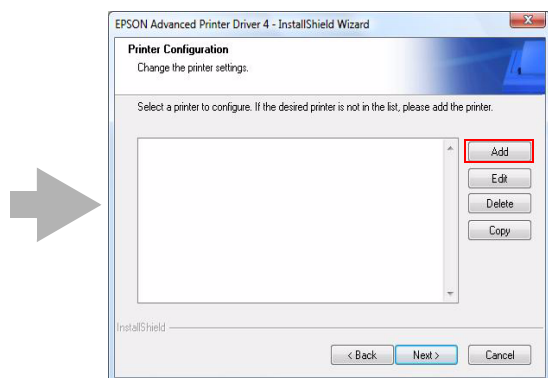
3 >



4 >



5 >



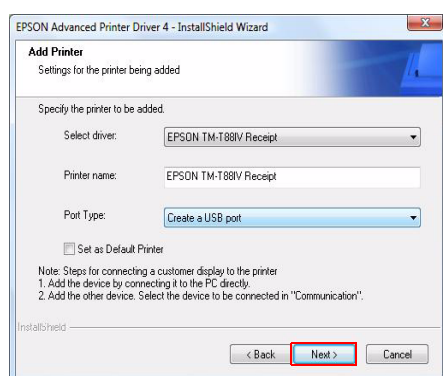
- 6** The “Add Printer” screen appears. Configure the printer driver and port to use, and click the (Next) button.

Setting	Description
Select driver	Select the printer driver to be installed.
Printer name	The printer driver name. This is changeable. Do not use Unicode/2-byte characters for the name.
Port Type	Select the type of interface to connect the computer and printer. Create a Parallel port: Proceed to Step 7. Create a Serial port: Proceed to Step 8. Create an Ethernet port: Proceed to Step 9. Create a USB port: Proceed to Step 10.
Set as Default Printer	Check when configuring the printer as that normally used from the Windows applications.

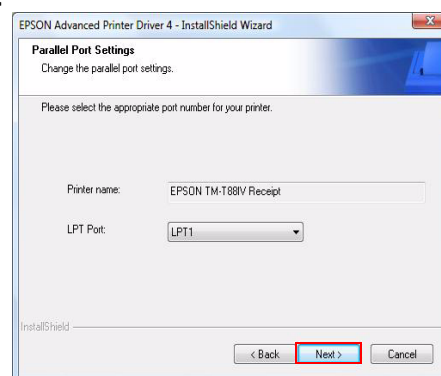
- 7** The “Parallel Port Settings” screen appears. Configure the settings of the Parallel port and click the (Next) button. Proceed to Step 10.

Setting	Description
Printer name	The printer name you entered at Step 6 is displayed. This cannot be changed.
LPT Port	Specify the number of parallel port used for connecting the printer. Usually, the port number is automatically displayed and no setting is required.

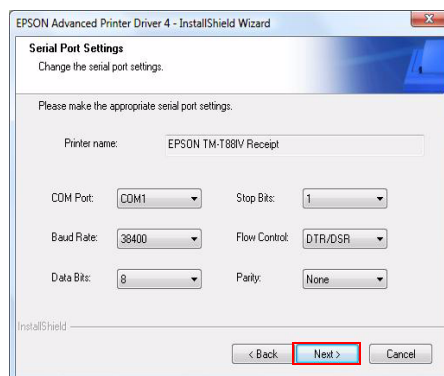
6 >



7 >

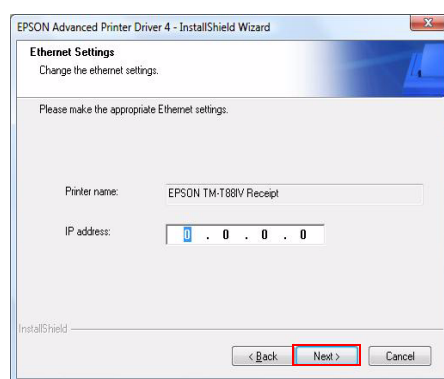


- 8 The “Serial Port Settings” screen appears. Configure the settings of the Serial port and click the (Next) button. Proceed to Step 10.



Setting	Description
Printer name	The printer name you entered at Step 6 is displayed. This cannot be changed.
COM Port	Specify the number of serial port used for connecting the printer.
Baud Rate	Specify the baud rate.
Data Bits	Specify the data bits.
Stop Bits	Specify the stop bits.
Flow Control	Specify the method of data flow between the computer and the printer.
Parity	Specify the parity.

- 9 The “Ethernet Settings” screen appears. Configure the IP Address of the TM printer and click the (Next) button. Proceed to Step 10.

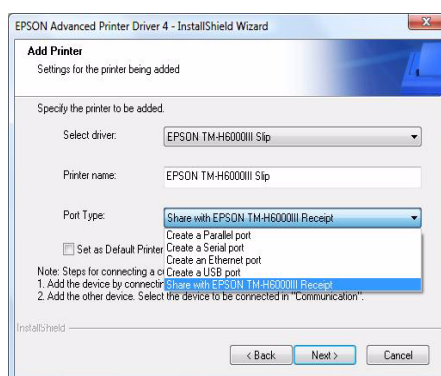


Setting	Description
Printer name	The printer name you entered at Step 6 is displayed. This cannot be changed.
IP address	Enter the printer IP address. To find the information about IP Address of the TM printer, see the Technical Reference Guide of each TM printer.

- 10** The display returns to the “Printer Configuration” screen. All the printer drivers, configured between Step 6 to Step 9, appear in the list. To install multiple printer drivers, repeat Step 5 to Step 9. To install the same printer driver multiple times, click the (Copy) button.

For the following installation combinations, select the setting of the first printer driver for the “Port Type” of the “Add Printer” screen (page 23) at Step 6 when you install the second or later printer drivers (example: “Share with EPSON TM-H6000III Receipt”).

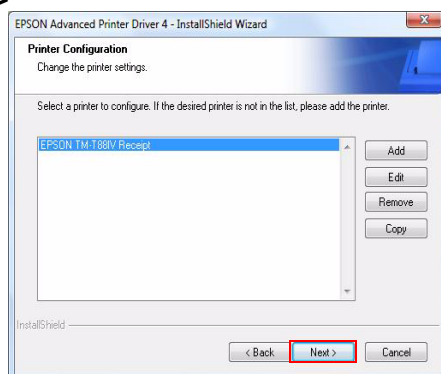
- Using both the Receipt driver and Slip driver for a hybrid printer
- Using peeler paper on one label printer and using full-label paper on another label printer
- Making multiple different print settings on multiple printer drivers
(Example: using two drivers, specify portrait receipt printing on one driver and specify landscape receipt printing on another driver)



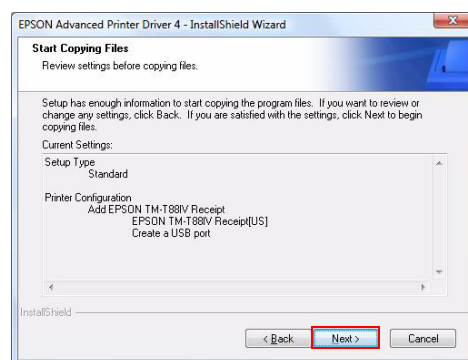
When the settings of the printer drivers are finished, click the (Next) button.

- 11** The “Start Copying Files” screen appears. See “Current Settings” to confirm the installation settings and then click the (Next) button.

10 >



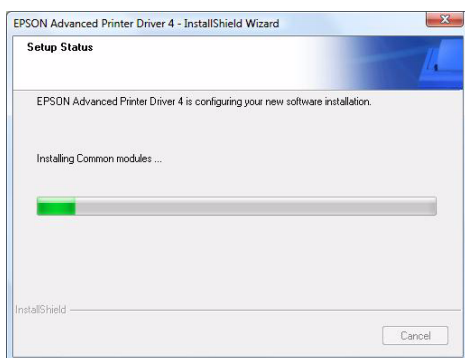
11 >



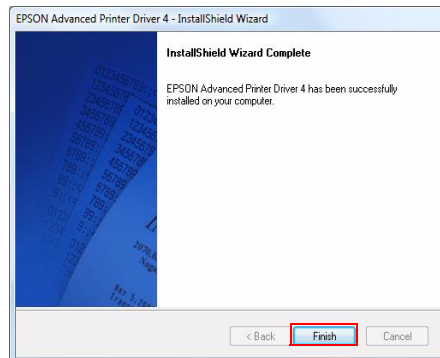
12 The APD is installed.

13 The “InstallShield Wizard Complete” screen appears. Click the (Finish) button to finish installation.

12 >

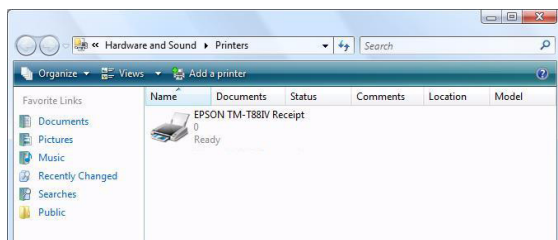


13 >



14 When printer drivers are added at Step 5, confirm that the printer drivers are installed in (Hardware and Sound) - (Printers) from (Start) - (Control Panel) ([Reference page of other OS.](#)).

When you have not added printer drivers at Step 5, no printer drivers are displayed in the (Printers).



Connecting the TM Printer

Before connecting the TM printer, set the Handshaking setting of the printer to "Receive buffer full".

Connect the TM printer. For information on how to connect the TM printer and configure the DIPSW, see the User's Manual supplied with the TM printer or the Technical Reference Guide.

CAUTION

- The maximum number of printers that can be simultaneously connected to multiple computers is 8.
- Turn off the power of the TM printer and wait for more than 5 seconds before turning on the power.

Parallel (LPT) connection

When the printer is connected, the "New Hardware Detected. EPSON TM-P2.01" screen appears then the "Found New Hardware Wizard" screen. In this case, perform the following steps.

- 1 Click the (Next) button to search for the driver.
- 2 The driver is found and installed.

Serial (COM) connection

When using the serial connection, make sure the printer settings match the printer driver port settings (BaudRate/DataBits/Parity/StopBits/FlowControl).

Ethernet (10/100 Base-T) connection

When using Ethernet connection, check the IP address setting. To configure the IP address, use the Epson TM Netwingconfig Utility. For details, see the "UB-E02 Technical Reference Guide."

Wireless LAN (IEEE 802.11b) connection

When using wireless LAN connection, check the IP address setting. To configure the IP address, use the Epson TM Netwingconfig Utility. Also check the security measures and location sufficiently. For details, see the "UB-R02 Technical Reference Guide."

USB connection

Do not connect the TM printer to the computer before installing the APD. In case you connect the TM printer first, delete the port drivers and reinstall the printer drivers without connecting the TM printer.

CAUTION

USB device requirements

- Maximum USB cable length is 5m, and 5 cascaded hubs maximum.
- Use the USB cable and the USB hubs compliant with USB2.0 specification (12Mbps).

NOTE

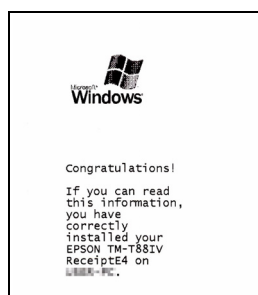
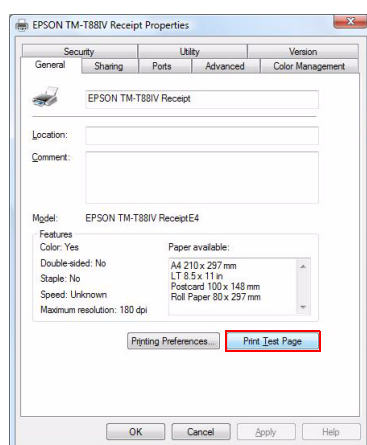
For USB power saving, see the C:\Program Files\EPSON\EPSON Advanced Printer Driver 4\TMUSB\readme_e.txt generated after the APD installation.

Print Test Page

After installing the APD, execute test print to check if the APD is properly installed and work normally.

Perform Print Test Page in the following procedures.

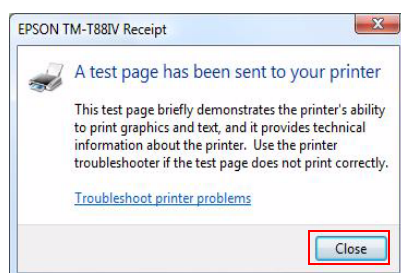
- 1 Open the Printers screen from (Start) - (Control Panel). Right click the printer driver you have installed and select (Properties) ([Reference page of other OS.](#)).
- 2 The Properties screen of the printer appears. Click the (Print Test Page) button to start test printing.



NOTE

- Print Test Page of the APD does not print all the data, unlike normal Print Test Page does.
- The Print Test Page prints characters and images as an image. The data volume is large for serial connection and may take longer to print compared with other interfaces.

- 3 The following screen appears. If the test print was output correctly, click the (Close) button. If the test print was not output correctly, click the (Troubleshoot...) button and perform troubleshooting in accordance with the Windows message.



Uninstallation

Uninstall everything related to APD (port drivers, printer drivers, and so on).

NOTE

The APD has the silent uninstallation function that enables you to uninstall without displaying any screens. For more details, see ["/uninstall : Silent Uninstallation" on page 71](#).

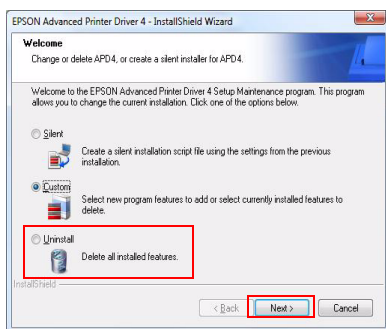
CAUTION

Do not uninstall printer drivers directly from [Start] - [Control Panel] - [Hardware and Sound] - [Printers] ([Reference page of other OS.](#)). Even if the icon (the printer driver) disappeared from the screen, APD is not uninstalled. To uninstall the printer driver, see ["Uninstalling the printer driver" on page 58](#).

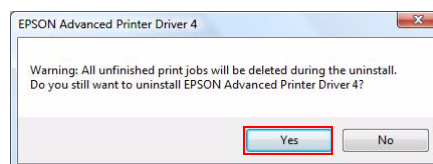
Follow the procedure below to uninstall the APD.

- 1 End all the other operations on the computer.
- 2 Select from (Start) - (All Programs) - (EPSON) - (EPSON Advanced Printer Driver 4) and open (Change or delete APD4, or create a silent installer for APD4.)
- 3 The "Welcome" screen appears. Select "Uninstall", then click the (Next) button.
- 4 The uninstallation confirmation screen appears. Click the (Yes) button.
- 5 The APD is uninstalled.

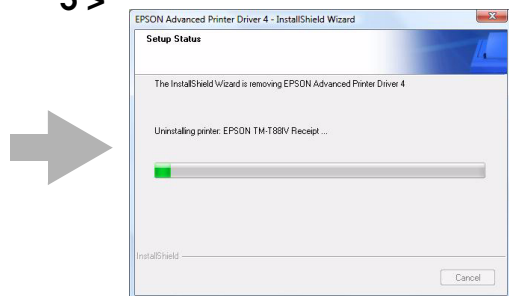
3 >



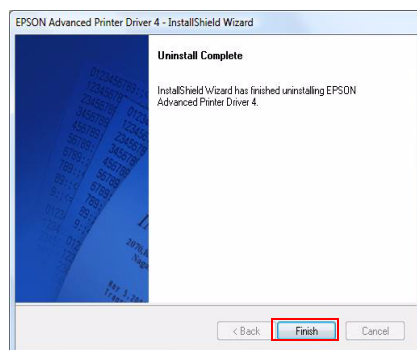
4 >



5 >



- 6** The “Uninstall Complete” screen appears. Click the (Finish) button to finish uninstallation.



When connecting Customer Display to TM printer

This section explains how to install the APD when connecting a Customer Display to a TM printer. For the APD of version 4.07 or later, the printer drivers for both 32 bit and 64 bit version OS are installed.

Installation Flow

1. **Installation when using pass-through connection (page 32)**
Installation when using Y-connection (page 36)

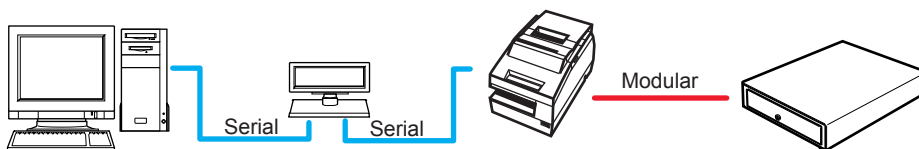


2. **Connecting the devices (page 40)**



3. **Test print/display (page 41)**

Installation when using pass-through connection



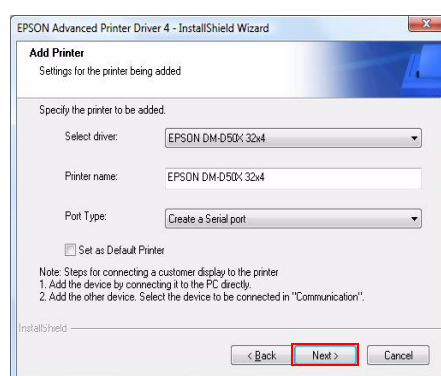
The pass-through connection is a connection method to connect the computer and the TM printer via the Customer Display.

The serial interface must be used and the communication settings on each of the three devices must be the same. For information on DIP switch / Memory switch settings on the Customer Display and the TM printer, see the User's Manual supplied with the TM printer or the Technical Reference Guide.

Follow the procedure below.

- 1** Double click the (APD) icon and start the installation.
- 2** The Install ShieldWizard screen appears. Click the (Next) button.
- 3** The "License Agreement screen" appears. Read the content and select "I accept the terms of the license agreement". Then click the (Next) button.
- 4** The "Setup Type" screen appears. Select "Standard", then click the (Next) button.
- 5** The "Printer Configuration" screen appears. Click the (Add) button.
- 6** The "Add Printer" screen appears. Select a printer driver and port to be used for the Customer Display, and click the (Next) button.

Setting	Description
Select driver	Select the printer driver for the Customer Display.
Printer name	The name of the driver for the Customer Display. Do not use Unicode/2-byte characters for the name.
Port Type	Select an interface to use for connecting the Customer Display. Select "Create a Serial port".
Set as Default Printer	Check when configuring the printer as that normally used from the Windows applications.

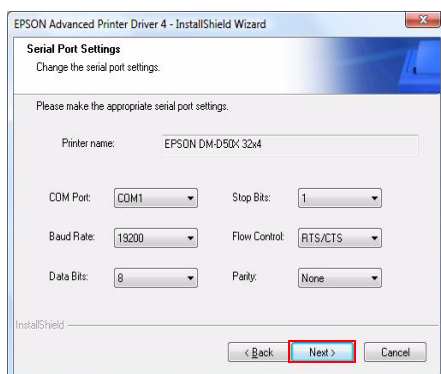


- 7** The “Serial Port Settings” screen appears. Configure the settings of the Serial port and click the (Next) button.

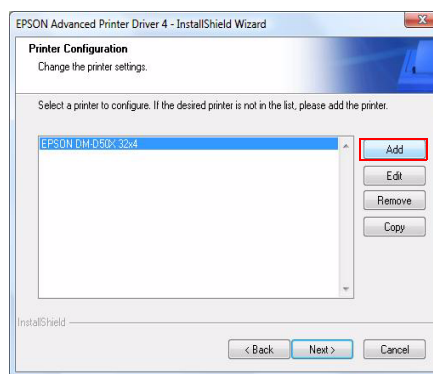
Setting	Description
Printer name	The printer name you entered at Step 6 is displayed. This cannot be changed.
COM Port	Specify the number of serial port used for connecting the printer.
Baud Rate	Specify the baud rate.
Data Bits	Specify the data bits.
Stop Bits	Specify the stop bits.
Flow Control	Specify the method of data flow between the computer and the printer.
Parity	Specify the parity.

- 8** The display returns to the “Printer Configuration” screen. Click the (Add) button to add a printer driver for the TM printer.

7>



8>

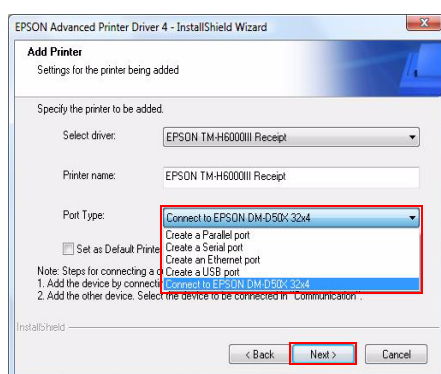


- 9** The “Add Printer” screen appears. First select a printer driver to use for the TM printer. Then, select the Port Type setting same as that for the Customer Display made at Step 6 to 7 (example: "Connect to EPSON DM-D50X 32x4"), and click the (Next) button.

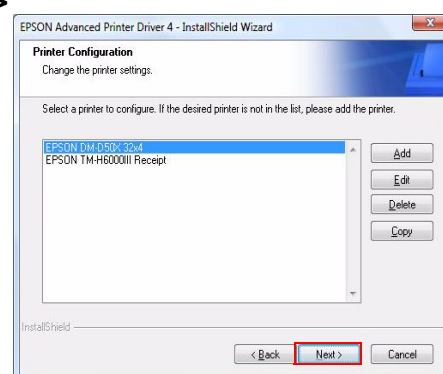
Setting	Description
Select driver	Select the printer driver to be installed.
Printer name	The printer driver name. This is changeable. Do not use Unicode/2-byte characters for the name.
Port Type	Select the type of interface to connect the computer and printer.
Set as Default Printer	Check when configuring the printer as that normally used from the Windows applications.

- 10** The display returns to the “Printer Configuration” screen. Click the (Next) button.
- 11** The “Start Copying Files” screen appears. See "Current Settings" to confirm the installation settings and then click the (Next) button.

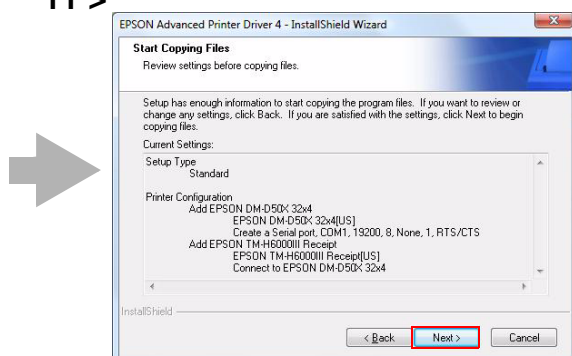
9 >



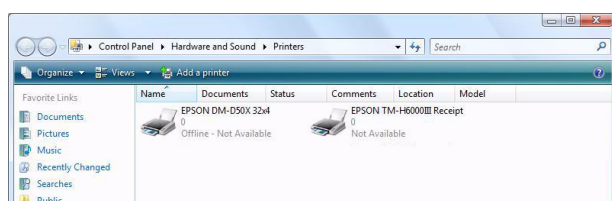
10 >



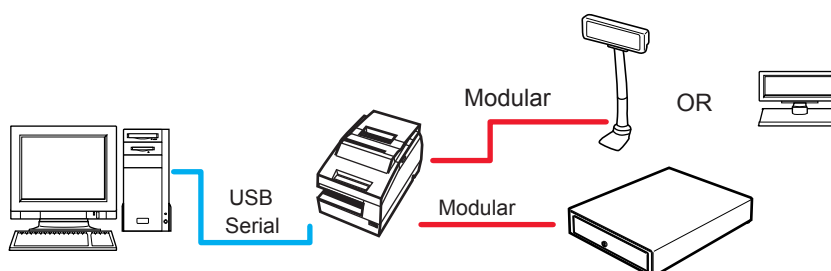
11 >



- 12 The APD is installed.
- 13 The “InstallShield Wizard Complete” screen appears. Click the (Finish) button to finish installation.
- 14 In (Start) - (Control Panel) - (Hardware and Sound) - (Printers) ([Reference page of other OS.](#)), check that the specified printer driver and Customer Display driver are correctly installed.



Installation when using Y-connection



The Y-connection is a connection method to connect the computer and the Customer Display via the TM printer.

The available interfaces of the computer and the TM printer are USB and serial. The TM printer and the Customer Display should be connected using the serial interface, and the modular cable of the Customer Display should be connected to the DM-D connector on the printer.

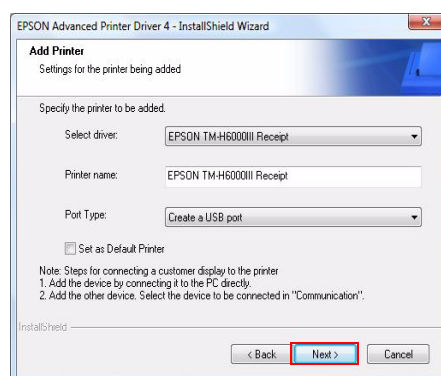
Set 19200 bps for the communication speed for the Customer Display.

When turning on the Customer Display and the TM printer, first turn on the Customer Display, and then turn on the printer.

For information on DIP switch / Memory switch settings on the Customer Display and the TM printer, see their Technical Reference Guide supplied with your model.

Follow the procedure below.

- 1** Double click the (APD) icon and start the installation.
- 2** The Install ShieldWizard screen appears. Click the (Next) button.
- 3** The "License Agreement" screen appears. Read the content and select "I accept the terms of the license agreement". Then click the (Next) button.
- 4** The "Setup Type" screen appears. Select "Standard", then click the (Next) button.
- 5** The "Printer Configuration" screen appears. Click the (Add) button.
- 6** The "Add Printer" screen appears. Select a printer driver and port to be used for the TM printer, and click the (Next) button.



Setting	Description
Select driver	Select the printer driver to be installed.
Printer name	The printer driver name. This is changeable. Do not use Unicode/2-byte characters for the name.
Port Type	Select the type of interface to connect the computer and printer. Create a Serial port: Proceed to Step 7. Create a USB port: Proceed to Step 8.
Set as Default Printer	Check when configuring the printer as that normally used from the Windows applications.

- 7** The “Serial Port Settings” screen appears. Configure the settings of the Serial port and click the (Next) button.

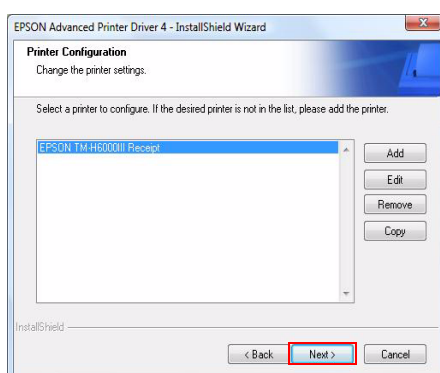
Setting	Description
Printer name	The printer name you entered at Step 6 is displayed. This cannot be changed.
COM Port	Specify the number of serial port used for connecting the printer.
Baud Rate	Specify the baud rate.
Data Bits	Specify the data bits.
Stop Bits	Specify the stop bits.
Flow Control	Specify the method of data flow between the computer and the printer.
Parity	Specify the parity.

- 8** The display returns to the “Printer Configuration” screen. Click the (Add) button to add a printer driver for the Customer Display.

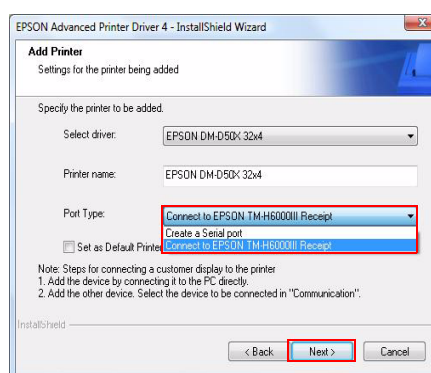
- 9** The “Add Printer” screen appears. First select a printer driver to use for the Customer Display. Then, select the Port Type setting same as that for the TM printer made at Step 6 to 7 (example: "Connect to EPSON TM-H6000III Receipt"), and click the (Next) button.

Setting	Description
Select driver	Select the printer driver for the Customer Display.
Printer name	The name of the driver for the Customer Display. Do not use Unicode/2-byte characters for the name.
Port Type	Select an interface to use for connecting the Customer Display.
Set as Default Printer	Select the printer driver for the Customer Display.

8>

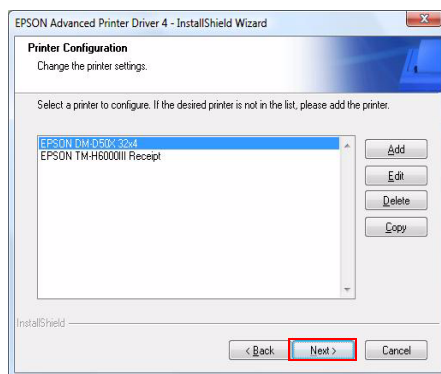


9>

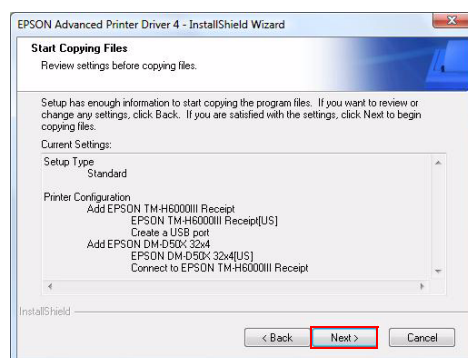


- 10** The display returns to the "Printer Configuration" screen. Click the (Next) button.
- 11** The "Start Copying Files" screen appears. See "Current Settings" to confirm the installation settings and then click the (Next) button.

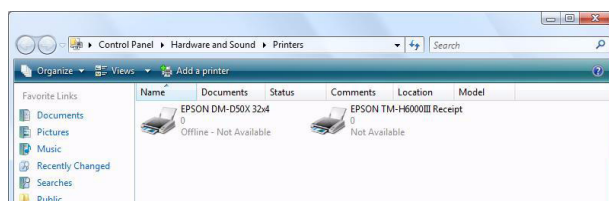
10 >



11 >



- 12** The APD is installed.
- 13** The "InstallShield Wizard Complete" screen appears. Click the (Finish) button to finish installation.
- 14** In (Start) - (Control Panel) - (Hardware and Sound) - (Printers) ([Reference page of other OS.](#)), check that the specified printer driver and Customer Display driver are correctly installed.



Connecting the devices

Confirm the following before connecting devices (TM printer, Customer Display)

- Set the Handshaking setting of the printer to "Receive buffer full".
- Configure the DIPSW when you connect the DM-D500 with the Y-connection.

Connect the TM printer. For information on how to connect the TM printer and configure the DIPSW, see the User's Manual supplied with the TM printer or the Technical Reference Guide.

CAUTION

- The maximum number of printers that can be simultaneously connected to multiple computers is 8.
- Turn off the power of the TM printer and wait for more than 5 seconds before turning on the power.

Serial (COM) connection

When using the serial connection, make sure the printer settings match the printer driver port settings (BaudRate/DataBits/Parity/StopBits/FlowControl).

USB connection

Do not connect the TM printer to the computer before installing the APD. In case you connect the TM printer first, delete the port drivers and reinstall the printer drivers without connecting the TM printer.

CAUTION

USB device requirements

- Maximum USB cable length is 5m, and 5 cascaded hubs maximum.
- Use the USB cable and the USB hubs compliant with USB2.0 specification (12Mbps).

NOTE

For USB power saving, see the C:\Program Files\EPSON\EPSON Advanced Printer Driver 4\TMUSB\readme_e.txt generated after the APD installation.

Test print/display

Use the following print and display tests to check if the APD is properly installed and functions normally.

TM printer

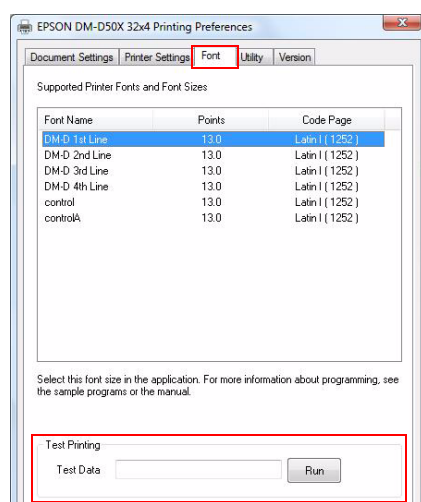
For TM printers, use the preset test print function to make a test print on the printers.
(For details, see ["Print Test Page" on page 29.](#))

Customer Display

For Customer Displays, use the preset test print function of the printer driver to send text data to the Customer Displays.

Follow the procedure below.

- 1** Select from (Start) - (Control Panel) - (Hardware and Sound) and open (Printers) and then right click the target printer driver and select (Printing Preferences...). ([Reference page of other OS.](#))
- 2** The Printing Preference screen appears. Select the (Font) tab.
- 3** Enter text data in the Test Data box to be displayed on the Customer Display, and click the (Run) button.



- 4** The text data entered in Step 3 will be displayed on the Customer Display when the APD has been properly installed.

Plug and Play

Using Windows Plug and Play function, a printer driver can be easily installed on a computer on which the APD is already installed.

CAUTION

- The Plug and Play function is available only for the TM printer with the USB interface.
- Slip Rotate for EPSON TM-H6000III cannot be installed using the Plug and Play function.

Installation Flow

1. [Connecting the TM Printer \(page 43\)](#)



2. [Installing the printer driver \(page 43\)](#)



3. [Print Test Page \(page 29\)](#)

Connecting the TM Printer

Connect the TM printer following the procedure below.

- 1 Check that "Receive buffer full" is set as a busy condition of the printer.
- 2 Connect the TM printer.

NOTE

- If you inadvertently connect the TM printer to the computer before installing the APD, delete the corresponding port driver and then, without connecting the TM printer, reinstall the printer driver.
- For information on how to connect the TM printer and check the DIP switch setting, see the User's Manual supplied with the TM printer or the Technical Reference Guide.

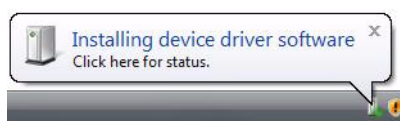
CAUTION

- The maximum number of printers that can be simultaneously connected to multiple computers is 8.
- Turn off the power of the TM printer and wait for more than 5 seconds before turning on the power.
- USB device requirements
 - * Maximum USB cable length is 5m, and 5 cascaded hubs maximum.
 - * Use the USB cable and the USB hubs compliant with USB2.0 specification (12Mbps).

For details, see the C:\Program Files\EPSON\EPSON Advanced Printer Driver 4\TMUSB\readme_e.txt generated after the APD installation.

Installing the printer driver

The printer driver is automatically installed when the connected printer is turned on. The following message appears in the lower right of the computer screen.



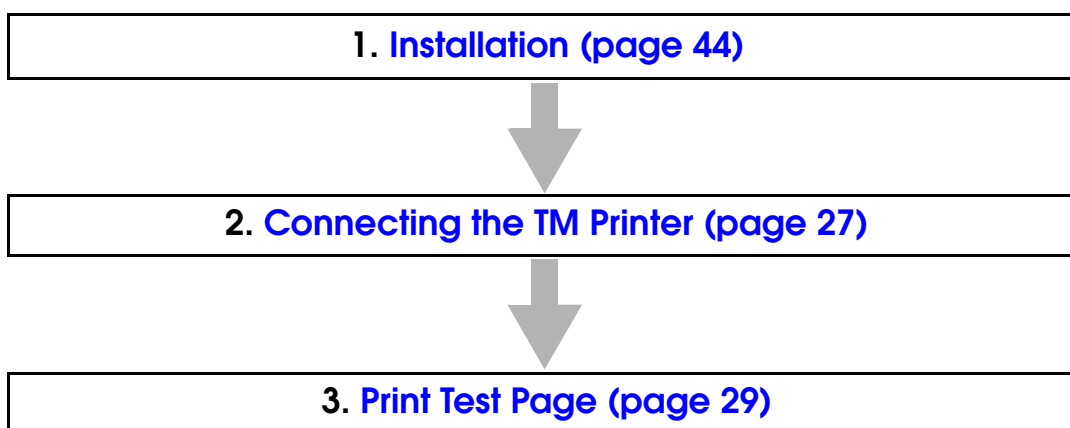
CAUTION

The printer driver cannot be added when the TM printer is offline (cover open, paper out, and so on.) When it recovers from the offline status, the printer driver will be added.

Custom Install

The custom installation allows you to install the APD with specified port drivers and tools. Use this method when you do not want to install unnecessary port drivers or tools. For the APD of version 4.07 or later, you can select either the 32 bit or 64 bit printer driver according to your OS environment.

Installation Flow



Installation

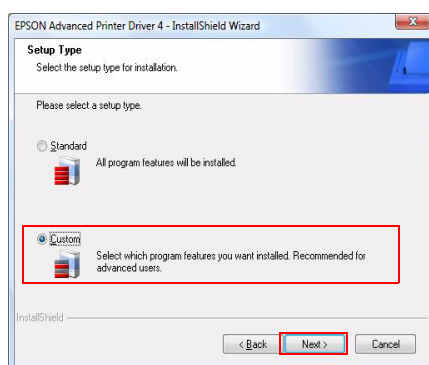
Follow the procedure below.

- 1** Start installing by double clicking the APD icon.
- 2** The InstallShield Wizard screen appears. Then click the (Next) button.
- 3** The "License Agreement" screen appears. Read through it and if you accept its terms, select "I accept the terms of the license agreement" and click the (Next) button.

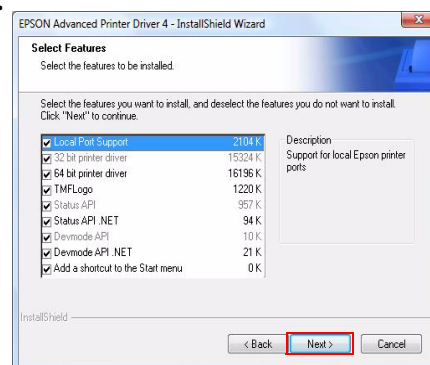
- 4 The "Setup Type" screen appears. Then select "Custom" and click the (Next) button.
- 5 The "Select Features" screen appears. Select the features of the APD you want to install, and then click the (Next) button. The following features are available.

Features	Description
32 bit printer driver	Supports EPSON printer driver for 32 bit version OS. Selectable when installing from 64 bit version OS.
64 bit printer driver	Supports EPSON printer driver for 64 bit version OS. Selectable when installing from 32 bit version OS.
TMFLogo	Installs the TMF logo tool that allows you to save bitmapped images to the TM printer.
Status API .NET	Supports Status API in .NET environment.
Devmode API .NET	Supports Devmode API in .NET environment.
Add a shortcut to the Start menu.	Shortcut icon to the APD will be added in the Start menu. Default setting : checked
TM-T88V Utility	Supports "TM-T88V Utility". (Select this only when using TM-T88V.)
TM-T20 Utility	Supports "TM-T20 Utility". (Select this only when using TM-T20.)

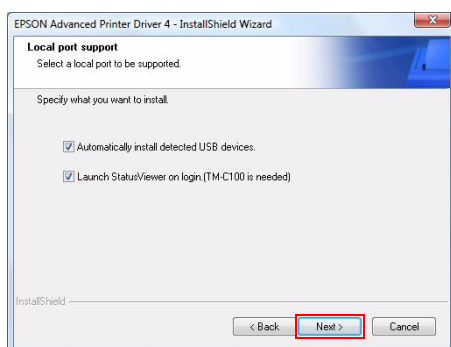
4 >



5 >



- 6** The “Local port support” screen appears. Select the port driver to be installed and then click the (Next) button. For Serial or Ethernet interface, do not select any printer driver and click (Next) button.



Item	Description
Automatically install detected USB devices.	When this is checked, the Plug and Play function will be enabled for the TM printer equipped with the USB interface. If this is not checked, the printer driver cannot be installed by the Plug and Play function.
Launch StatusViewer on login. (TM-C100 is needed)	When this is checked, the Status Viewer automatically starts to run when you login the computer.

- 7** The “Printer Configuration” screen appears. When installing the printer driver as well as the APD, click the (Add) button.

- 8** The “Add Printer” screen appears. Configure the printer driver and port to use, and click the (Next) button.

Setting	Description
Select driver	Select the printer driver to be installed.
Printer name	The printer driver name. This is changeable. Do not use Unicode/2-byte characters for the name.
Port Type	Select the type of interface to connect the computer and printer. Create a Parallel port: Proceed to Step 9. Create a Serial port: Proceed to Step 10. Create an Ethernet port: Proceed to Step 11. Create a USB port: Proceed to Step 12.
Set as Default Printer	Check when configuring the printer as that normally used from the Windows applications.

- 9** The “Parallel Port Settings” screen appears. Configure the settings of the Parallel port and click the (Next) button. Proceed to Step 12.

Setting	Description
Printer name	The printer name you entered at Step 8 is displayed. This cannot be changed.
LPT Port	Specify the number of parallel port used for connecting the printer. Usually, the port number is automatically displayed and no setting is required.

- 10** The “Serial Port Settings” screen appears. Configure the settings of the Serial port and click the (Next) button. Proceed to Step 12.

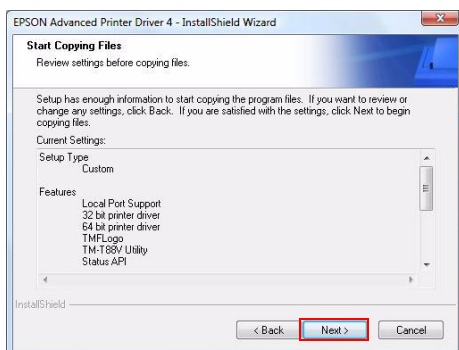
Setting	Description
Printer name	The printer name you entered at Step 8 is displayed. This cannot be changed.
COM Port	Specify the number of serial port used for connecting the printer.
Baud Rate	Specify the baud rate.
Data Bits	Specify the data bits.
Stop Bits	Specify the stop bits.
Flow Control	Specify the method of data flow between the computer and the printer.
Parity	Specify the parity.

- 11** The “Ethernet Settings” screen appears. Configure the IP Address of the TM printer and click the (Next) button. Proceed to Step 12.

Setting	Description
Printer name	The printer name you entered at Step 8 is displayed. This cannot be changed.
IP address	Enter the printer IP address. To find the information about IP Address of the TM printer, see the Technical Reference Guide of each TM printer.

- 12** The display returns to the “Printer Configuration” screen. All the printer drivers, configured between Step 8 to Step 11, appear in the list. To install multiple printer drivers, repeat Step 7 to Step 11. To install the same printer driver multiple times, click the (Copy) button. When the settings of the printer drivers are finished, click the (Next) button.

- 13** The “Start Copying Files” screen appears. See “Current Settings” to confirm the settings to be installed and then click the (Next) button.



- 14** The APD is installed.
- 15** The “InstallShield Wizard Complete” screen appears. When you click the (Finish) button, the installation ends.
- 16** In (Start) - (Control Panel) - (Hardware and Sound) - (Printers), check that the specified printer driver is correctly installed. ([Reference page of other OS.](#))

Shared Printer

APD4 supports shared printer (Point&Print). This section describes how to install a shared printer into a client computer.

The uninstallation procedure is also provided.

NOTE

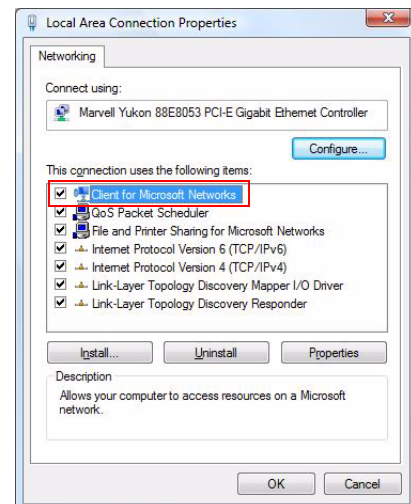
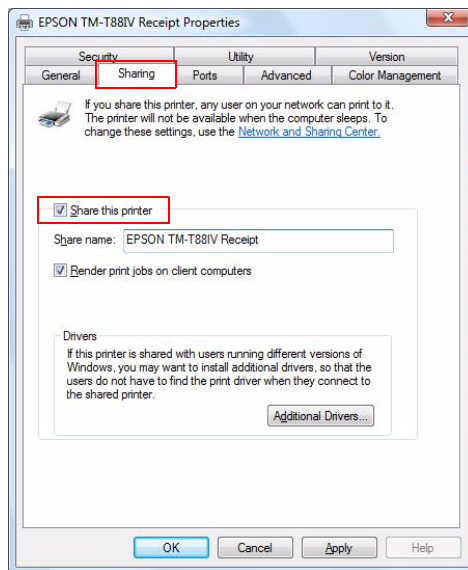
When you install both 32 bit and 64 bit printer drivers on a server, the shared printer environment can be provided for clients using 32 bit and 64 bit version OS.

For example, if you connect a 32 bit client to a 64 bit server, the 32 bit printer driver installed in the 64 bit server will be installed.

Installation

Before installing the printer to be shared, check the followings.

- Make sure the printer is set for sharing on a server to which the printer to be shared is connected.
- Make sure Client for Microsoft Networks is installed on a server and a client computer on which the APD will be installed.

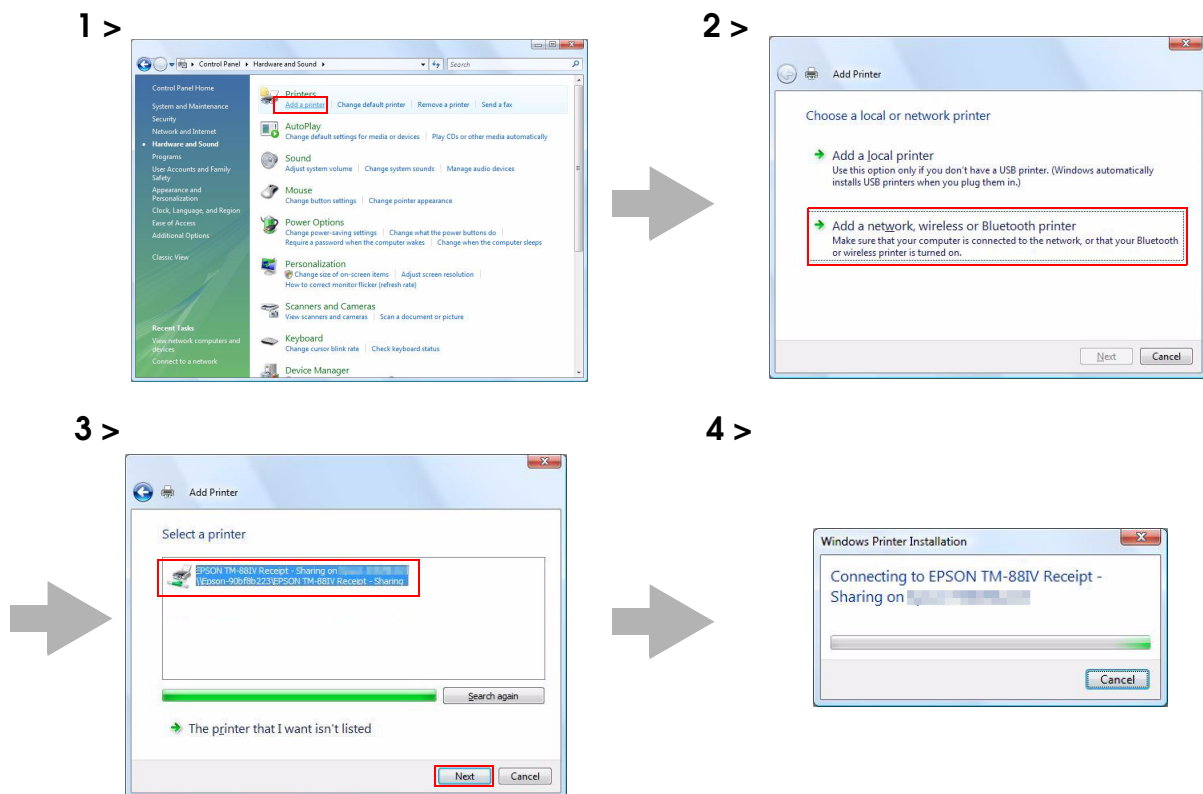


NOTE

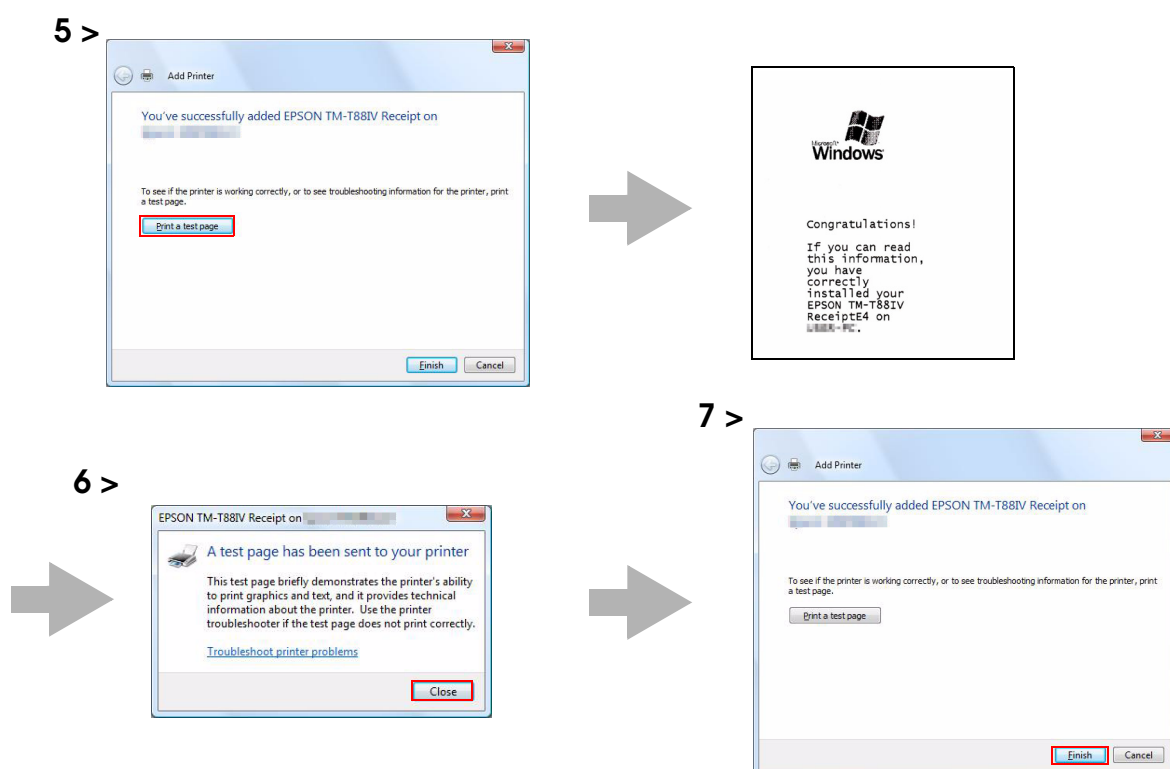
When more than one user uses one client computer, each user must install Client for Microsoft Networks.

Follow the procedures below to install the shared printer on the client computer.

- 1** From (Start) - (Control Panel) - (Hardware and Sound), select (Add a printer). ([Reference page of other OS.](#))
- 2** The "Choose a local or network printer" screen appears. Select (Add a network, wireless or Bluetooth printer).
- 3** The "Select a printer" screen appears. Select a printer to be shared on the displayed list, and click the (Next) button.
- 4** The selected shared printer is installed.



- 5 Click the (Print a test page) button to check if the printer functions normally.
- 6 The following screen appears. If the test print was output correctly, click the (Close) button. If the test print was not output correctly, click the (Troubleshoot...) button and perform troubleshooting in accordance with the Windows message.
- 7 Click the (Finish) button to finish the installation.



- 8 In (Start) - (Control Panel) - (Hardware and Sound) - (Printers), check that the specified printer driver is correctly installed. ([Reference page of other OS.](#))

Uninstallation

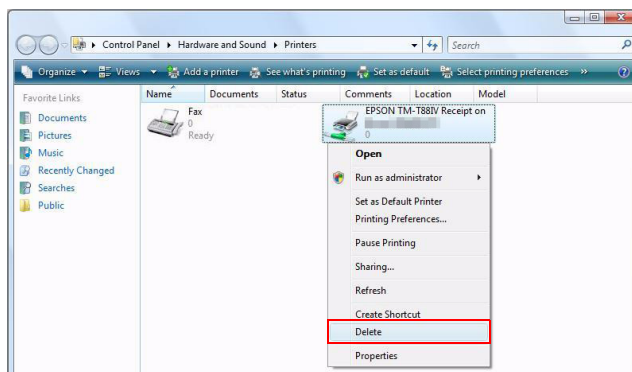
This section describes how to uninstall a shared printer from a client computer.

- Uninstall the shared printer [page 52](#)
- Uninstall the APD [page 53](#)

Uninstalling the shared printer

Follow the procedures below to uninstall the shared printer.

- 1** From (Start) - (Control Panel) - (Hardware and Sound), select (Printers).
([Reference page of other OS.](#))
- 2** Right click on the printer driver to be deleted and select (Delete).



Uninstalling the APD

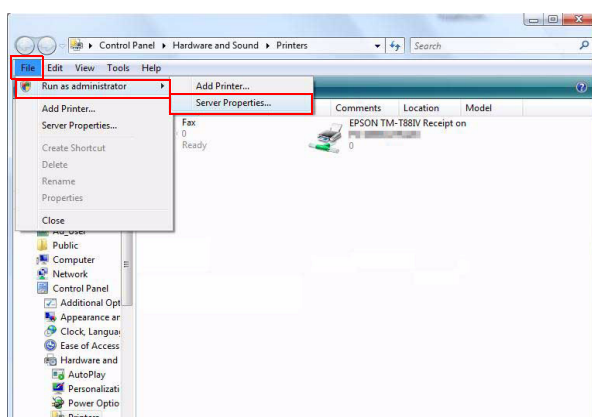
Follow the procedures below to uninstall the APD.

CAUTION

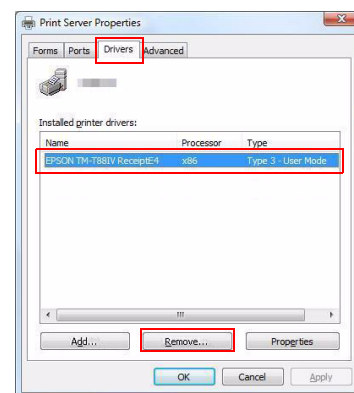
Uninstallation of the APD must be executed by an administrator.
A normal user needs an administrator's password to execute the uninstallation.

- 1** Uninstall all the shared printers. See ["Uninstalling the shared printer" on page 52.](#)
- 2** From (Start) - (Control Panel) - (Hardware and Sound), select (Printers). ([Reference page of other OS.](#))
- 3** From (File) - (Run as administrator), select (Server Properties). ([Reference page of other OS.](#))
- 4** The "Print Server Properties" screen appears.
Select a printer driver to delete in the (Drivers) tab, and click the (Remove) button.

3 >



4 >

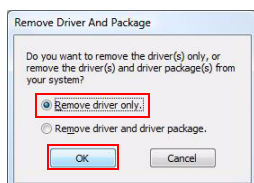


- 5** The “Remove Driver And Package” screen appears. Select “Remove driver only,” and click the (OK) button.

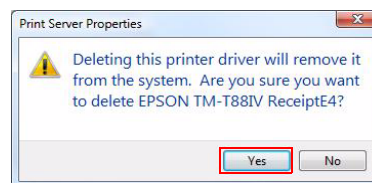
For Windows XP, the screen in Step 5 does not appear. Go to Step 6.

- 6** The “Print Server Properties” screen appears. Click the (Yes) button to delete the printer driver selected in Step 4.

5 >

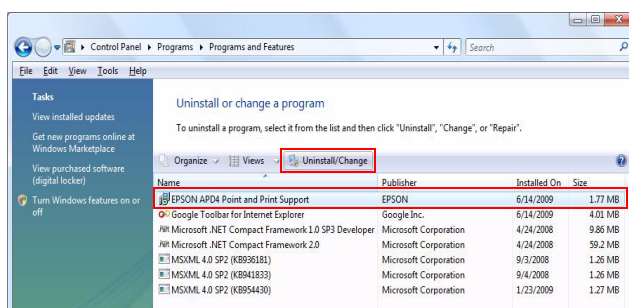


6 >



- 7** From (Start) - (Control Panel), select (Uninstall a program). ([Reference page of other OS.](#))

- 8** Select “EPSON APD4 Point and Print Support,” and click the (Uninstall) button to delete “EPSON APD4 Point and Print Support,” and uninstallation of the APD is completed.



Maintenance after Installing the APD

Maintenance procedures after the APD is installed.

- Adding the printer driver
- Uninstalling the printer driver
- Replacing a printer
- Changing the port settings of the printer driver
- Upgrade installing the APD

Adding the printer driver

Follow the procedures below to install the printer driver.

CAUTION

You cannot add the printer drivers directly from [Start] - [Control Panel] - [Hardware and Sound] - [Printers]. ([Reference page of other OS.](#))

- 1 Select from (Start) - (All Programs) - (EPSON) - (EPSON Advanced Printer Driver 4) and open (Change or delete APD4, or create a silent installer for APD4.)
- 2 The "Welcome" screen appears. Then select "Custom" and click the (Next) button.
- 3 The "Select Features" screen appears. Select the features of the APD you want to install, and then click the (Next) button. The following features are available.

Features	Description
32 bit printer driver	Supports EPSON printer driver for 32 bit version OS. Selectable when installing from 64 bit version OS.
64 bit printer driver	Supports EPSON printer driver for 64 bit version OS. Selectable when installing from 32 bit version OS.
TMfLogo	Installs the TMF logo tool that allows you to save bitmapped images to the TM printer.
Status API .NET	Supports Status API in .NET environment.
Devmode API .NET	Supports Devmode API in .NET environment.
Create shortcut on Start menu.	Shortcut icon to the APD will be added in the Start menu. Default setting : checked
TM-T88V Utility	Supports "TM-T88V Utility". (Select this only when using TM-T88V.)
TM-T20 Utility	Supports "TM-T20 Utility". (Select this only when using TM-T20.)

- 4** The “Local Port Support” screen appears. Select the port driver to be installed and then click the (Next) button. For Serial or Ethernet interface, do not select any printer driver and click (Next) button.

Item	Description
Automatically install detected USB devices.	When this is checked, the Plug and Play function will be enabled for the TM printer equipped with the USB interface. If this is not checked, the printer driver cannot be installed by the Plug and Play function.
Launch StatusViewer on login. (TM-C100 is needed)	When this is checked, the Status Viewer automatically starts to run when you login the computer.

- 5** The “Printer Configuration” screen appears. When installing the printer driver as well as the APD, click the (Add) button.

- 6** The Add Printer screen appears. Configure the printer driver and port to use, and click the (Next) button.

Setting	Description
Select driver	Select the printer driver to be installed.
Printer name	The printer driver name. This is changeable. Do not use Unicode/2-byte characters for the name.
Communication	Select the type of interface to connect the computer and printer. Create a Parallel port: Proceed to Step 7. Create a Serial port: Proceed to Step 8 Create an Ethernet port: Proceed to Step 9. Create a USB port: Proceed to Step 10.
Set as Default Printer	Check when configuring the printer as that normally used from the Windows applications.

- 7** The “Parallel Port Settings” screen appears. Configure the settings of the Parallel port and click the (Next) button. Proceed to Step 10.

Setting	Description
Printer name	The printer name you entered at Step 6 is displayed. This cannot be changed.
LPT Port	Specify the number of parallel port used for connecting the printer. Usually, the port number is automatically displayed and no setting is required.

- 8** The “Serial Port Settings” screen appears. Configure the settings of the Serial port and click the (Next) button. Proceed to Step 10.

Setting	Description
Printer name	The printer name you entered at Step 6 is displayed. This cannot be changed.
COM Port	Specify the number of serial port used for connecting the printer.
Baud Rate	Specify the baud rate.
Data Bits	Specify the data bits.
Stop Bits	Specify the stop bits.
Flow Control	Specify the method of data flow between the computer and the printer.
Parity	Specify the parity.

- 9** The “Ethernet Settings” screen appears. Configure the IP Address of the TM printer and click the (Next) button. Proceed to Step 10.

Setting	Description
Printer name	The printer name you entered at Step 6 is displayed. This cannot be changed.
IP address	Enter the printer IP address. To find the information about IP Address of the TM printer, see the Technical Reference Guide of each TM printer.

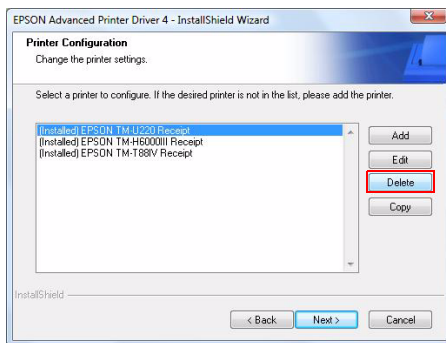
- 10** The display returns to the “Printer Configuration” screen. All the printer drivers, configured between Step 6 to Step 9, appear in the list. To install multiple printer drivers, repeat Step 5 to Step 9. To install the same printer driver multiple times, click the (Copy) button. When the settings of the printer drivers are finished, click the (Next) button.
- 11** The “Start Copying Files” screen appears. Confirm the printer driver to be installed which is displayed in “Current Settings” and then click the (Next) button.
- 12** The printer driver added in the list at Step 10 is installed.
- 13** The “Maintenance Complete” screen appears. When you click the (Finish) button, the process of installing the printer driver ends.

Uninstalling the printer driver

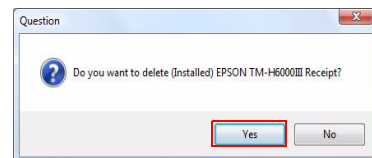
Follow the procedures below to uninstall the printer driver.

- 1** Select from (Start) - (All Programs) - (EPSON) - (EPSON Advanced Printer Driver 4) and open (Change or delete APD4, or create a silent installer for APD4.)
- 2** The "Welcome" screen appears. Then select "Custom" and click the (Next) button.
- 3** The "Select Features" screen appears. Click the (Next) button.
- 4** The "Local Port Support" screen appears. Click the (Next) button.
- 5** The "Printer Configuration" screen appears. Select the printer driver from the list which you want to remove, and click the (Delete) button.
- 6** A screen appears to confirm the remove action. Click the (Yes) button.

5 >

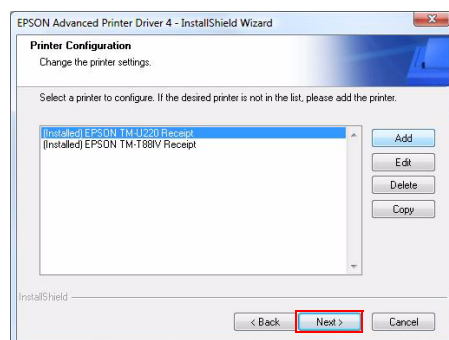


6 >

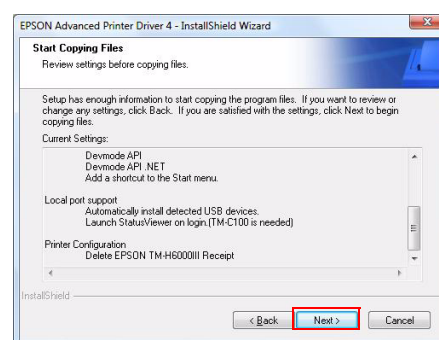


- 7 The display returns to the "Printer Configuration" screen. Click the (Next) button.
- 8 The "Start Copying Files" screen appears. Confirm the printer driver to be removed which is displayed in "Current Settings" and then click the (Next) button.

7 >



8 >



- 9 The printer driver removed in Step 5 to Step7 will be removed.
- 10 The "Maintenance Complete" screen appears. When you click the (Finish) button, the process of uninstalling the printer driver ends.

Replacing a printer

When you replace the TM printers equipped with the same interface, beware of the following.

- Set the new TM printer's DIPSW as same as the previous TM printer's settings regardless of interface.
- If the memory switch is changed, see the User's Manual or the Technical Reference Guide of each TM printer.

Configure the following settings for each interface.

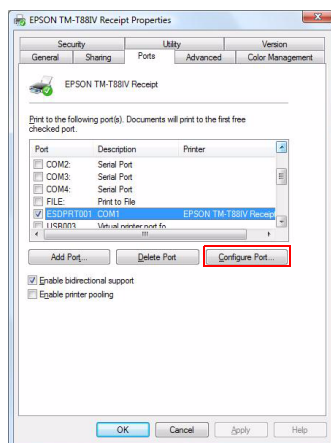
Interface	Description
Parallel	No configuration is required after replacement.
Serial	With the DIPSW settings, if the settings of the Serial connection is same as previous TM printer, no configuration is required after replacement.
USB	No configuration is required after replacement.
Ethernet	When the new TM printer's IP Address is set as same as the previous TM printer's settings, no configuration is required.

Changing the port settings of the printer driver

Change the port setting of the printer driver to match the communication setting of the printer. Serial setting of the serial connection and the IP Address of the Ethernet connection can be changed. The port settings of the Epson port will be changed in this procedure.

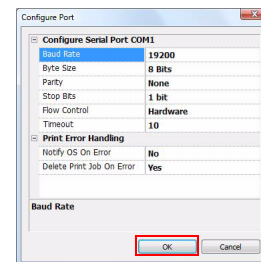
- 1 Select from (Start) - (Control Panel) - (Hardware and Sound) and open (Printers) and then right click the target printer driver and select (Properties) ([Reference page of other OS.](#)).
- 2 The property screen of the TM printer appears. Select the (Ports) tab and then click the (Configure Port...) button.
- 3 The Configure Port screen appears. Set a configure port while referring to the screen and click the (OK) button.

2 >

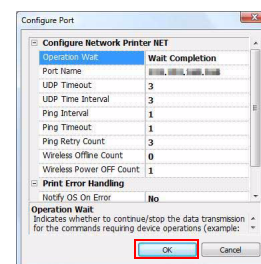


3 >

Serial



Ethernet



- 4 The display returns to the Properties screen. When you click the (OK) button, the changes you made becomes effective.

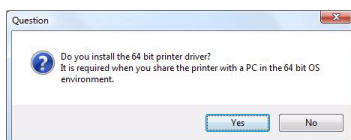
Upgrade Install of the APD

Follow the procedures below to perform upgrade installation of the APD of the new version.

- 1 Double-click the APD icon to start the installation.
- 2 The "InstallShield Wizard" screen appears. Click the (Next) button.
- 3 The "License Agreement" screen appears. Confirm its content, select "I accept the terms of the license agreement," and click the (Next) button.
- 4 The screen asking whether you want to upgrade the APD to the new version appears. Click the (Yes) button.

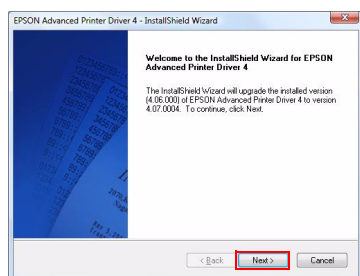
NOTE

In the case of upgrade install of the APD4.06a or earlier, the screen asking whether you want to install the 64 bit printer driver appears. Clicking the (Yes) button provides the shared printer environment to clients using 64 bit version OS.

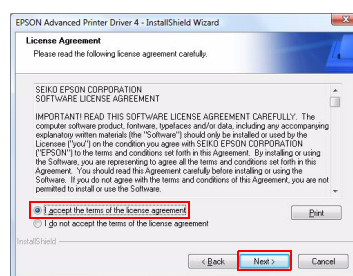


- 5 The "Start Upgrading" screen appears. Confirm the content of installation in the "Current Settings" field, and click the (Next) button.

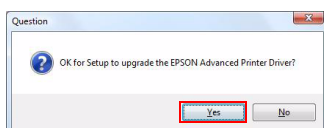
2 >



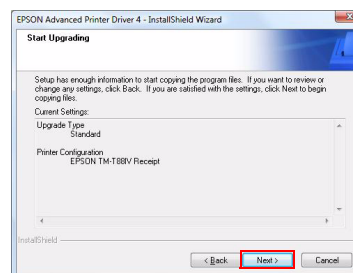
3 >



4 >



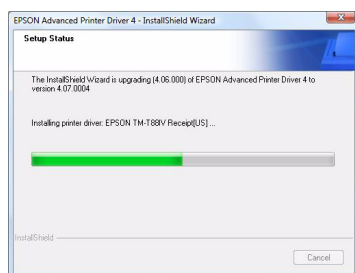
5 >



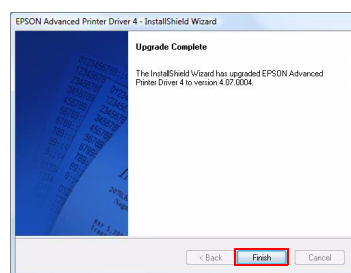
6 The upgrade installation of the APD starts.

7 The “Upgrade Complete” screen appears. Click the (Finish) button to complete the upgrade installation.

6 >



7 >



Silent Installation

This chapter describes the procedures for the Silent Installation.

What Is a Silent Installation?

The silent installation is a method that copies the existing APD setup environment to other computers without user operation. There are the following two methods.

❑ Using a silent installation package (*.exe)

Create the silent installation package on the copy source computer.

- Executing this file on another computer enables you to install the minimum environment for operating the APD from all the environment of the copy source computer.
- When the silent installation is executed with this file, you cannot create the silent installation package or the script file for the silent installation, or add another printer.

❑ Using a script file (*.inf) for the silent installation

Create the script file for the silent installation on the copy source computer.

- Executing this file and the APD file (APD_4xxE.exe) on another computer enables you to install the complete APD environment of the copy source computer.
- In the environment in which the silent installation is executed with this file, you can create the silent installation package or the script file for the silent installation, and you can also add another printer.

With this function, you can incorporate the APD installation into a batch file, a recovery disc for the OS, and an installer of an application.

Also, you can add the command options for the silent installation to enable the following functions.

- Notification when completing the installation
- Restart setting after completing the installation
- Upgrade installation settings
- Installing without displaying screens.

CAUTION

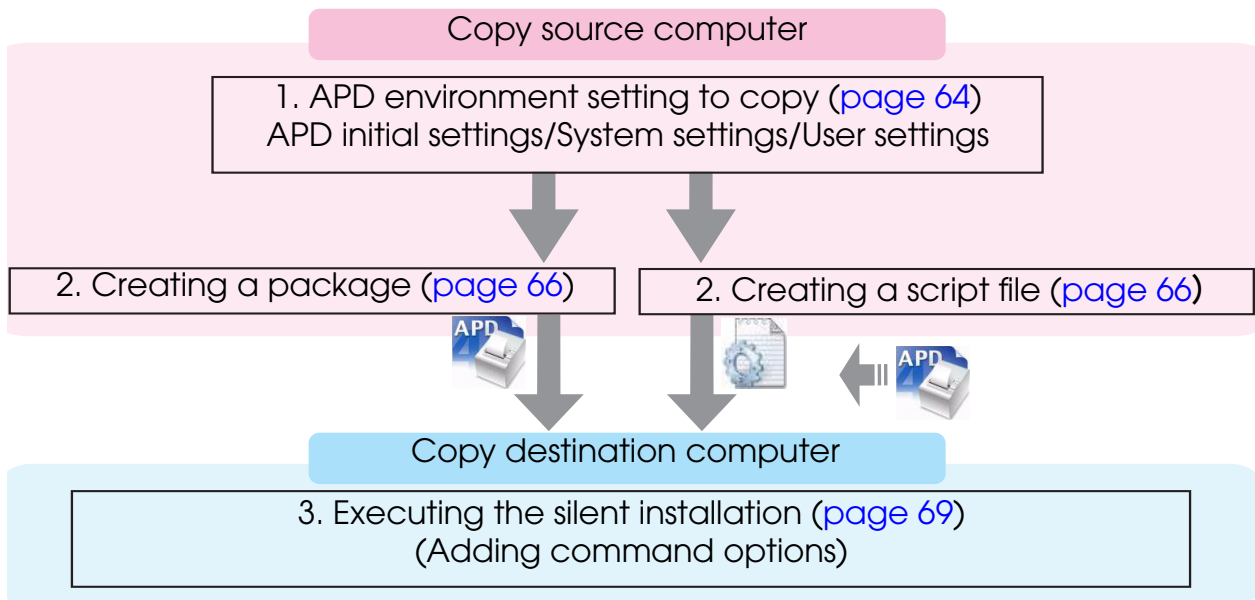
- To use the silent installation, Internet Explorer version 4.0 or later is required.
- When APD3 or APD4 have been already installed in the target computers, uninstall those before the silent installation.

This method is useful especially in the following cases:

- You can make the same setting to multiple computers easily.
- Even computers with no displays can be set up.
- In case of printing trouble, the APD environment of the computer with an error can be recreated on another computer by using the script file for the silent installation of that computer, and it improves the service and maintenance function. (In the environment in which the silent installation is executed with the silent installation package, the script file for the silent installation cannot be created.)

Flow of the Silent Installation

The flow of the silent installation is described below.



Setting the APD Environment To Be Copied

Create the APD environment for the silent installation on the copy source computer.

Following APD environment to be copied can be selected.

- APD initial setting
This is the setting when installing the APD.
- System setting
This is the system setting for the printer.
- User setting
This is the user setting for the printer. The same setting as that of the copy source computer.

APD Setting

When copying the user setting or system setting of the printer, see the “TM/BA/EU Printer Manual” to make settings.

Making the system setting

Select (Start) - (Control Panel) - (Hardware and Sound) - (Printers), right-click the printer, and select (Properties) - (Advanced) - (Printing Defaults) to make settings. ([Reference page of other OS.](#))

Making the user setting

Select (Start) - (Control Panel) - (Hardware and Sound) - (Printers), right-click the printer, and select (Properties) - (General) - (Printing Preferences) to make settings. ([Reference page of other OS.](#))

Creating a Package or Script file

Create the silent installation package or the script file for the silent installation.

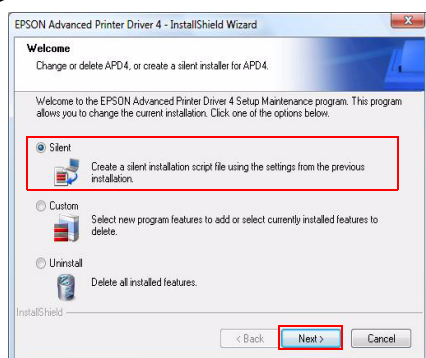
First, confirm which APD environment to copy on the copy source computer. (See ["Setting the APD Environment To Be Copied" on page 64](#))

Follow the steps below.

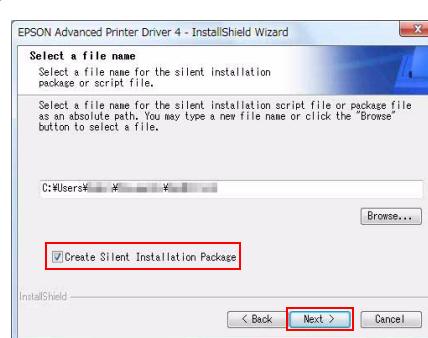
- 1 Select from (Start) - (All Programs) - (EPSON) - (EPSON Advanced Printer Driver 4) and open (Change or delete APD4, or create a silent installer for APD4.)
- 2 The "Welcome" screen appears. Select "Silent", then click the (Next) button.
- 3 The "Select a file name" screen appears.
Specify a destination folder and file name, and specify which type of file to create. Click the (Next) button.

Setting	Description
Location to save the file and file name	Specify a destination and a file name for the file to be created.
Create silent installation package	<ul style="list-style-type: none">• Check when you want to create a silent installation package.• Uncheck when you want to create a script file for the silent installation. (Checked by default.)

2 >



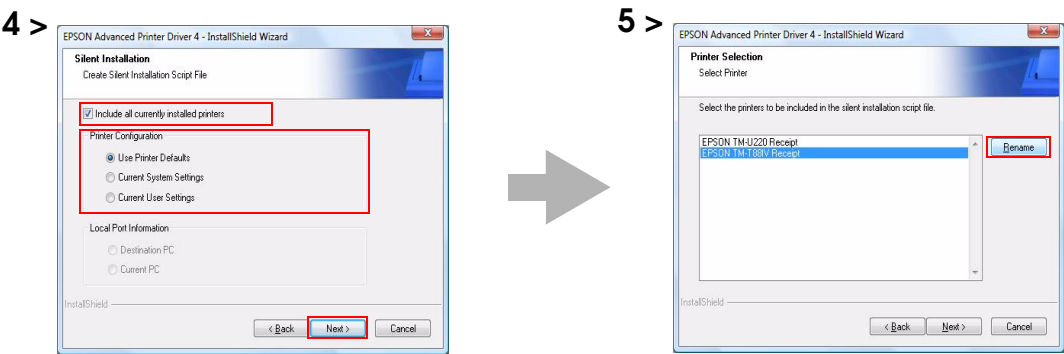
3 >



- 4** The “Silent Installation” screen appears. Select the setting you want to copy from (Printer Configuration), and select the printer to be installed. If you do not want to select all the printers installed in the copy source computer with the APD, uncheck (Include all currently installed printers). Click the (Next) button.
- The setting in (Printer Configuration) is the default value for the copy destination printer. When installing multiple printers, you cannot change each printer individually.
 - Go to Step 7 when you check (Include all currently installed printers).

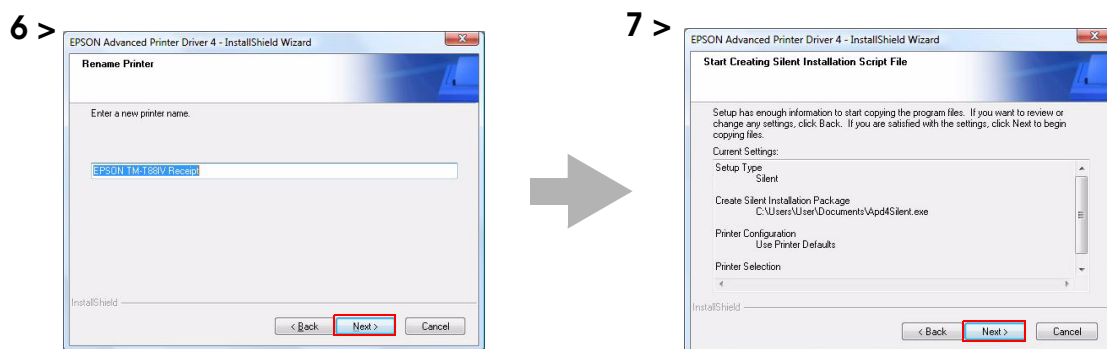
Setting	Description
Include all currently installed printers	If checked, all the APD printers installed in the copy source computer are selected. If unchecked, each APD printer installed in the copy source computer can be selected. (Checked by default.)
Printer Configuration	Select the printer setting that you want to copy.
Use Printer Defaults	Setting when the APD is installed is used.
Current System Settings	System settings of the printer You can check them by selecting (Properties) - (Advanced) - (Printing Defaults).
Current User Settings	User Settings of the printer You can check them by selecting (Properties).
Local Port Information	Not available.

- 5** “Printer Selection” screen appears. Select the printer driver you want to copy. To change the printer name, click the (Rename) button. If you do not want to change the printer name, go to step 7 by clicking the (Next) button.



6 The "Rename Printer" screen appears. Change the printer driver name, and click the (Next) button.

7 The "Start Creating Silent Installation Script File" screen appears. Make sure that the file information displayed in "Current Settings" is correct and click the (Next) button to create the silent installation package or the script file for the silent installation.



8 The "Maintenance Complete" screen appears. Click the (Finish) button. The silent installation package or the script file for the silent installation has been created in the destination folder specified in Step 3.

Executing the Silent Installation

You can execute the silent installation using the following methods.

- Execute the silent installation package on the copy destination computer.
- Copy the script file for the silent installation and the APD file, and execute a command from the command prompt.
- Develop a batch file or an application for the APD installation, and execute it.

How to execute the Silent Installation

Following the procedures below to execute the silent installation.

Installing using the silent installation package

Copy the silent installation package to the copy destination computer, and execute the following command.

```
>[Package File Name(specified with the full path)]
```

Ex: D:\APD>Apd4Silent.exe

When checking the result of silent installation using a package file, check that the specified printer driver is correctly installed in [Start] - [Control Panel] - [Hardware and Sound] - [Printers].

Installing using the script file for the silent installation

Copy the script file for the silent installation and the APD file, and execute the following command.

```
>[APD_4xxE.exe (specified with the full path)]  
[ /s /f1 "Apd4Silent.inf (specified with the full path)"]
```

Ex: D:\APD>APD_400E.exe /s /f1"D:\APD\Apd4Silent.inf"

Checking the Installation Result

The silent installation results of the silent installation package/script file for the silent installation can be checked in the “Result Code” of “setup.log” which is created in the same location as that of the package or the file.

The contents of “Result Code” are as follows.

Result Code	Description
0	Completed successfully
-3	The APD has already been installed.
2	The files needed for silent installation could not be found.
1151	The OS does not support the APD.
1223	The silent installation was cancelled by the user.

Command Options

The command options of the silent installation and how to make settings are described below.

NOTE

You can use the command options in combination.

/s /f1 : Silent installation using the script file

Using this command option enables you to execute the silent installation using the script file for the silent installation.

For more details, see ["Installing using the script file for the silent installation" on page 69](#).

/s /a : Upgrade

Using this command option enables you to upgrade the APD. Printers not supported by the APD4 are deleted.

Example

```
D:\APD4\APD_406E.exe /s /a
```

/uninstall : Silent Uninstallation

Using this command option enables you to uninstall using the command line.

Example

```
D:\APD4\APD_400E.exe /s /uninstall
```



When “/s” is not attached, the uninstallation screen is displayed.

/d : Display the silent installation result in a dialog

Using this command option enables you to display the silent installation result in a dialog when the installation is completed.

Example

Package File

```
D:\APD4\Apd4Silent.exe /d
```

Script File

```
D:\APD4\APD_400E.exe /s /f1"D:\APD4\Apd4Silent.inf" /d
```

/w /m :

Display a window message of the silent installation completion

Adding the Windows handle and message ID to the command enables you to display a window message of the silent installation completion.

Example

In the example below, Windows handle is 0x6789abc, and message ID is 0x0501

Package File

```
D:\APD4\Apd4Silent.exe /w6789abc /m0501
```

Script File

```
D:\APD4\APD_400E.exe /s /f1"D:\APD4\Apd4Silent.inf" /w6789abc /m0501
```

/r : Restart setting after the installation

Using this command option enables you to make the restart setting of OS after the silent installation is completed.

Example when you want to restart

Package File

```
D:\APD4\Apd4Silent.exe /rY
```

Script File

```
D:\APD4\APD_400E.exe /s /f1"D:\APD4\Apd4Silent.inf" /rY
```

Example when you do not want to restart

Package File

```
D:\APD4\Apd4Silent.exe /rN
```

Script File

```
D:\APD4\APD_400E.exe /s /f1"D:\APD4\Apd4Silent.inf" /rN
```

/l : Specify the install log file

Using this command option enables you to specify the output destination of the installation log (Apd4Setup.log). Normally this is output in the Windows folder.

Example

Package File

```
D:\APD4\Apd4Silent.exe /l"D:\APD4\log.txt"
```

Script File

```
D:\APD4\APD_400E.exe /s /f1"D:\APD4\Apd4Silent.inf"  
/l"D:\APD4\log.txt"
```